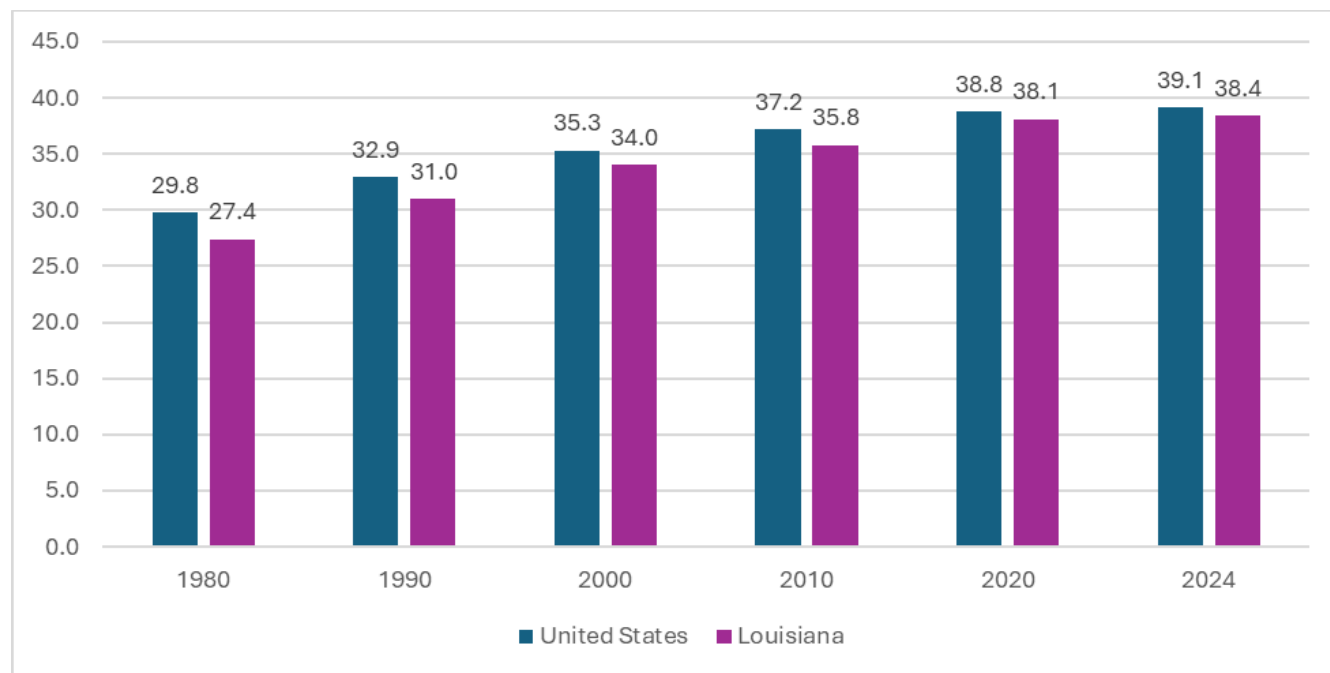


Louisiana in Focus:

Louisiana's Increasing Senior Population 1980 to 2024

It's no secret that America is getting older. Declining birth rates and longer life expectancy have aged our country. Between 1980 and 2024 the median age for the United States increased from 29.8 to 39.1. The same is true for Louisiana. The median age for Louisiana has increased from 27.4 in 1980 to 38.4 in 2024. Figure 1 compares the median age in the United States to Louisiana between 1980 and 2024. As can be seen, Louisiana has experienced a slightly greater increase than the United States.

Figure 1. Median Age 1980-2024 in the United States and Louisiana

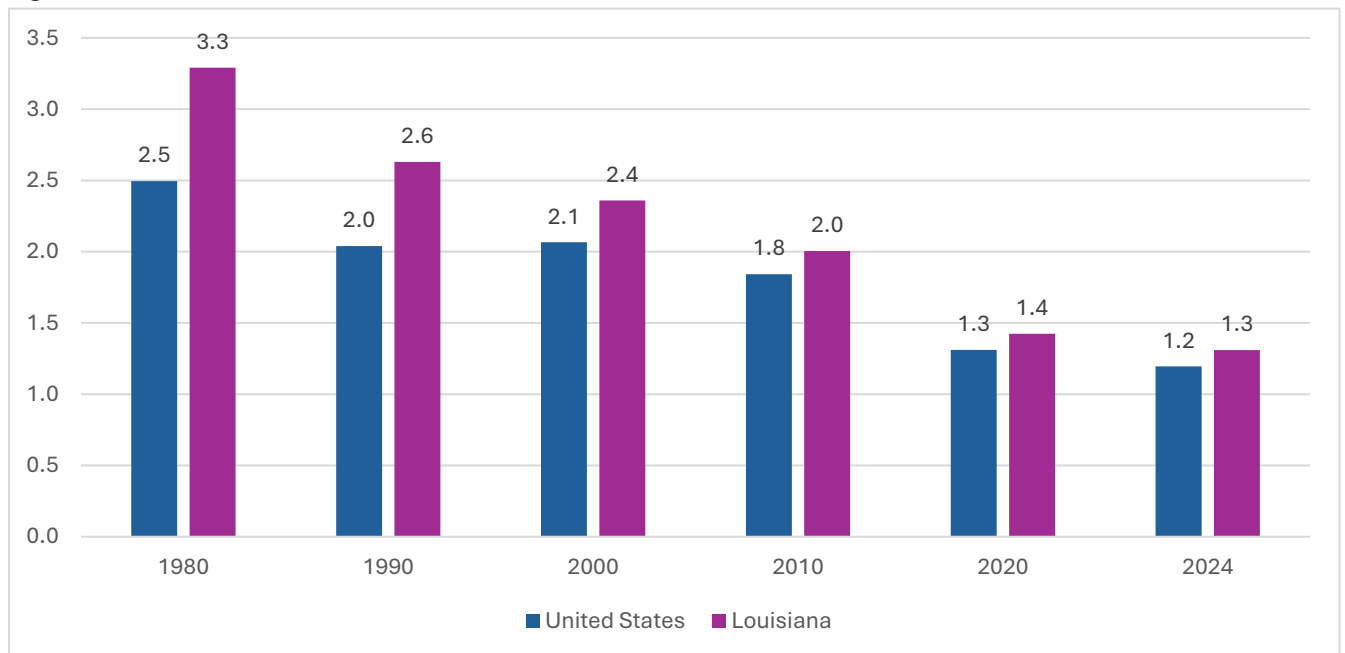


Source: U.S. Census Bureau, 1980-2020 Decennial Censuses and Vintage 2024 Population Estimates

In 1980, only 11 parishes had a median age over 30, by 2024 only one parish had a median age under 30 and 25 had a median age over 40. See table 1 for each individual parish. This increase in median age has been driven by the change in the percentage of our population that is under 18 (children) and the percentage of the population aged 65 or older (seniors). As can be seen in Figure 2 the ratio of children to seniors in Louisiana has decreased from

3.3 in 1980 to 1.3 in 2024. This decrease for Louisiana is larger than what has occurred in the United States as a whole.

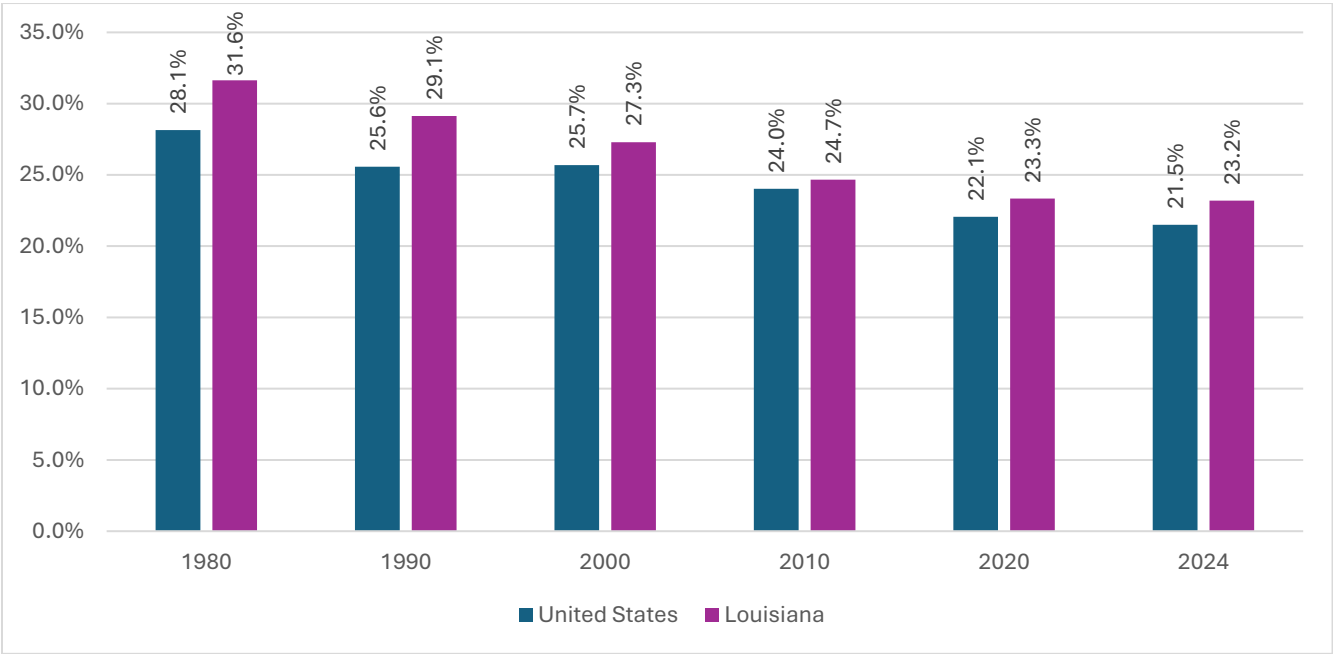
Figure 2. Children to Seniors Ratio 1980-2024



Source: U.S. Census Bureau, 1980-2020 Decennial Censuses and Vintage 2024 Population Estimates

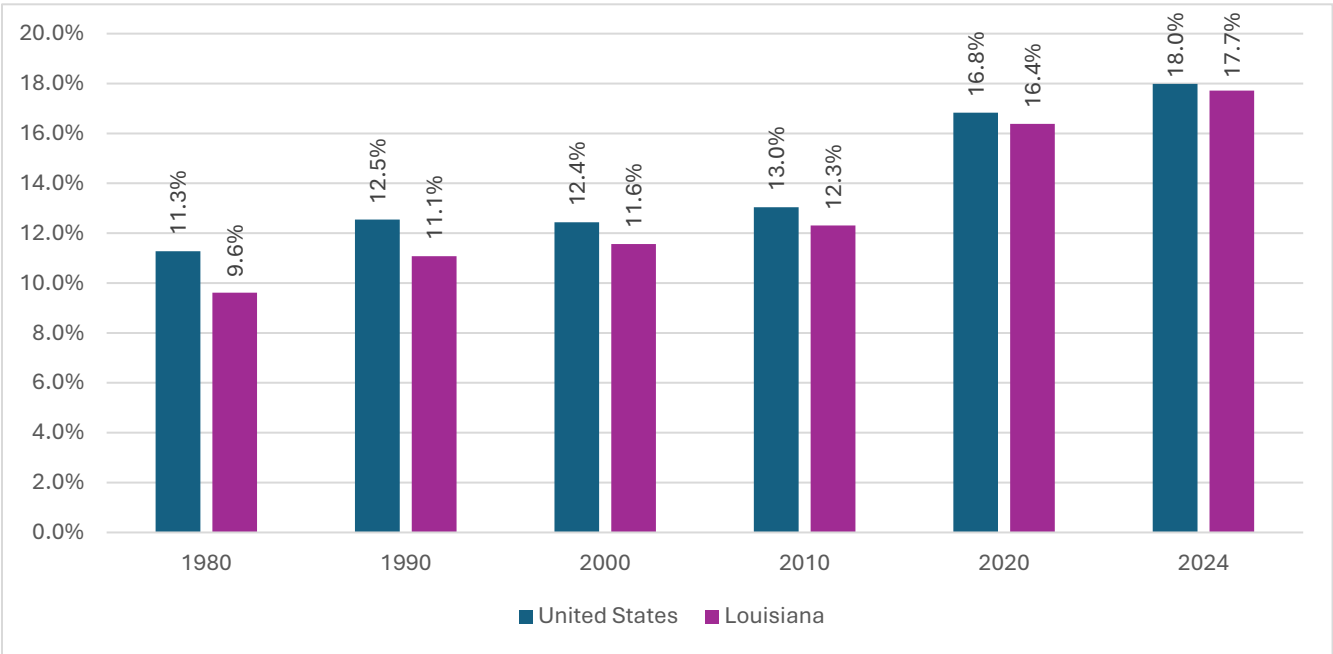
The percentage of Louisiana's population, that is children, decreased from 31.6% in 1980 to 23.2% in 2024. As can be seen in Figure 3, this decrease mirrors what's happening to the United States. While the percentage of our population, that is children, is decreasing, the opposite is happening for seniors. Louisiana's seniors' population increased from 9.6% in 1980 to 17.7% in 2024. As can be seen in Figure 4, this increase is a larger than United States increase.

Figure 3. Percent of Population Under 18, 1980-2024



Source: U.S. Census Bureau, 1980-2020 Decennial Censuses and Vintage 2024 Population Estimates

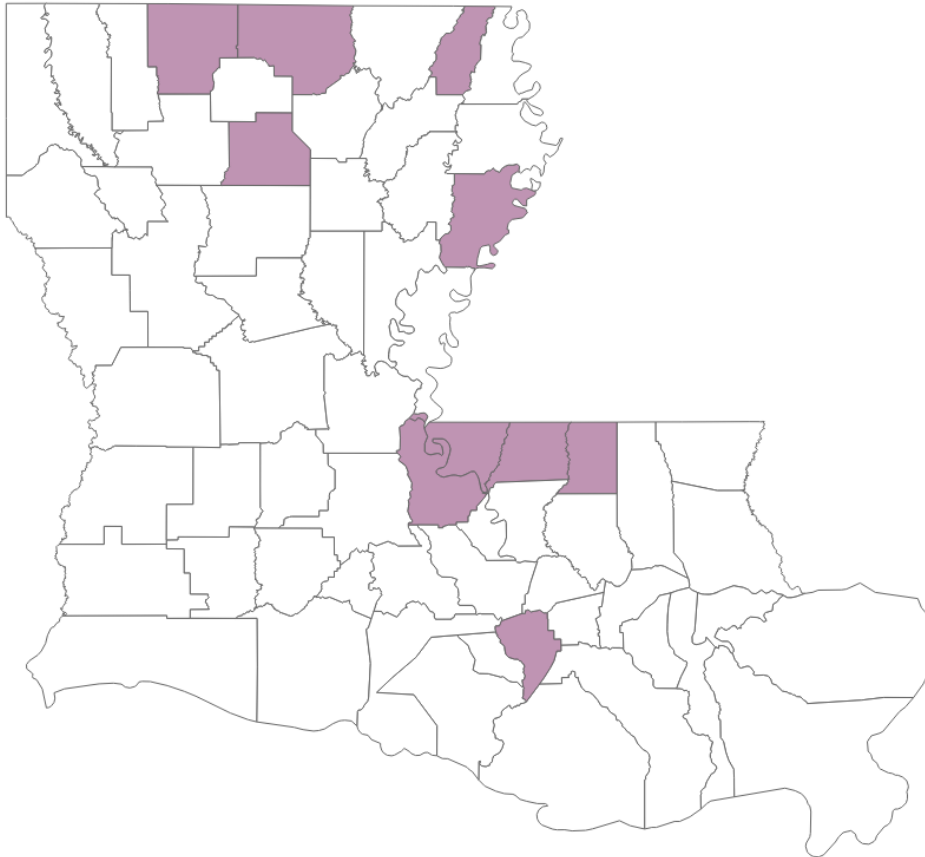
Figure 4. Percent of Population 65 and Older, 1980-2024



Source: U.S. Census Bureau, 1980-2020 Decennial Censuses and Vintage 2024 Population Estimates

Comparing the number of seniors to children in the Census' 2024 Vintage 2024 Population Estimates, we find that in 10 parishes seniors outnumber children. These parishes are highlighted in figure 5.

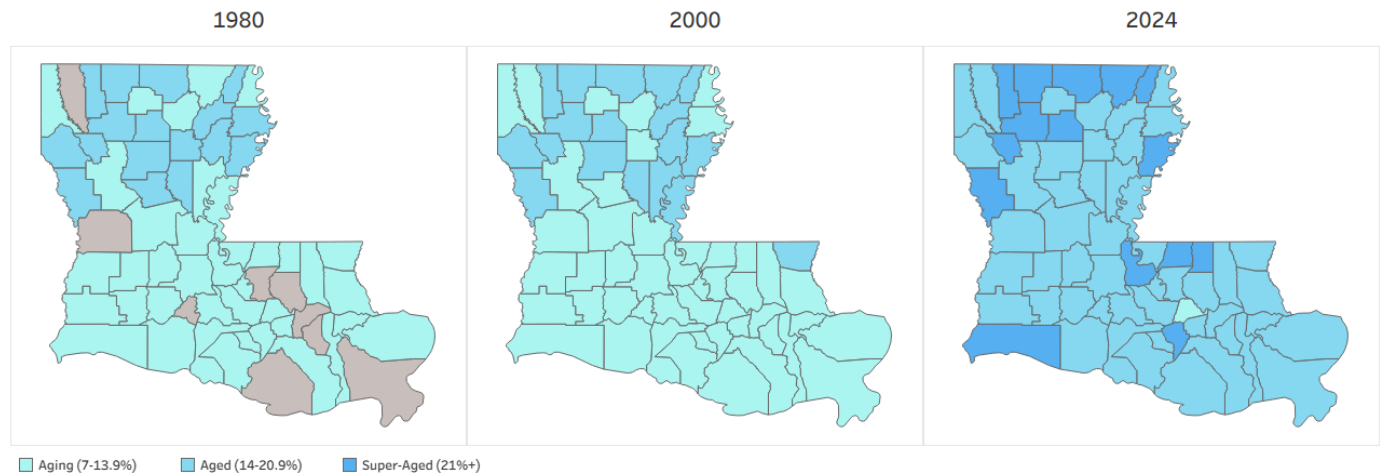
Figure 5. Parishes Where Seniors Outnumber Children



Source: U.S. Census Bureau, Vintage 2024 Population Estimates

We can see how the state has aged if we compare the percentage of seniors in 1980, 2000, and 2024. The World Health Organization and the United Nations categorize countries as aging (if 7-13.9% of the population is seniors), aged (14-20.9% seniors), or super-aged (21% or more seniors). If we apply those categories to Louisiana's parishes, we can see that in 1980, 17 parishes were aged, 38 were aging, and the remaining 9 parishes were neither. As can be seen in figure 6, by 2000 there were 46 parishes that were aging and the remaining 18 were aged. In 2024, only one parish remained as aging, 48 parishes were aged, and 15 parishes were super-aged. These super-aged parishes tend to be concentrated in the northern part of the state.

Figure 6. Aging, Aged, and Super-Aged Parishes 1980, 2000, & 2024



Source: U.S. Census Bureau, 1980 & 2000 Decennial Censuses and Vintage 2024 Population Estimates

This demographic change has large policy implications from the amount of required elder care, types of housing, labor force makeup and participation, etc. The remainder of the report shows how the individual parishes compare to each other and breaks out the children to senior ratio for Louisiana's four largest MSAs.

Table 1. Median Age 1980-2024 in Louisiana

	1980	1990	2000	2010	2020	2024
Acadia Parish	27.0	30.5	33.7	35.7	39.1	37.8
Allen Parish	29.3	32.5	34.8	37.4	39.6	37.5
Ascension Parish	25.5	29.4	32.0	34.3	36.2	37.3
Assumption Parish	24.8	29.7	34.2	38.9	42.9	43.7
Avoyelles Parish	29.3	32.7	35.2	38.1	40.5	39.0
Beauregard Parish	27.7	31.6	35.5	36.6	39.0	37.6
Bienville Parish	32.3	34.6	38.0	41.8	43.9	42.9
Bossier Parish	26.6	30.6	33.8	34.7	36.2	37.2
Caddo Parish	29.0	32.7	35.1	36.4	39.4	39.9
Calcasieu Parish	27.5	31.6	34.5	35.9	37.0	37.6
Caldwell Parish	31.4	33.5	36.7	39.6	41.2	39.5
Cameron Parish	26.9	30.6	35.0	39.9	42.4	42.5
Catahoula Parish	28.4	32.3	36.7	38.8	41.3	41.2
Claiborne Parish	33.2	34.7	37.7	40.7	45.0	43.2
Concordia Parish	27.7	32.3	36.9	37.7	40.1	39.3
De Soto Parish	30.5	32.4	36.3	39.7	41.3	40.7
East Baton Rouge Parish	26.1	29.9	31.5	32.6	35.2	34.3
East Carroll Parish	24.5	27.8	30.9	34.3	36.0	36.8
East Feliciana Parish	27.8	31.0	35.8	41.1	45.9	44.3
Evangeline Parish	27.9	31.0	33.7	35.9	39.4	37.2
Franklin Parish	29.5	32.4	35.9	38.8	40.4	39.7
Grant Parish	31.3	31.9	35.5	36.8	39.4	37.9
Iberia Parish	25.9	29.8	33.3	35.6	39.3	38.5
Iberville Parish	26.3	30.4	34.4	37.9	41.7	39.8
Jackson Parish	32.0	34.5	37.6	39.6	42.6	42.2
Jefferson Parish	27.9	32.2	35.9	38.4	39.8	40.3
Jefferson Davis Parish	27.3	31.4	34.5	37.7	38.9	38.7
Lafayette Parish	25.8	29.8	32.4	33.2	36.4	37.2
Lafourche Parish	25.2	29.5	34.1	36.5	38.4	39.5
LaSalle Parish	30.7	34.8	36.4	37.9	38.1	36.7
Lincoln Parish	23.5	24.6	26.5	27.8	29.9	28.7
Livingston Parish	26.4	30.2	32.8	34.4	36.6	36.6
Madison Parish	26.1	29.9	29.8	34.6	38.1	37.7
Morehouse Parish	28.7	32.1	35.6	39.1	42.8	41.7
Natchitoches Parish	27.0	29.2	30.2	33.3	37.3	33.9
Orleans Parish	28.7	31.5	33.1	34.6	36.2	39.7
Ouachita Parish	26.9	30.2	32.3	34.1	36.4	37.2
Plaquemines Parish	25.4	29.5	33.7	36.3	36.8	38.8
Pointe Coupee Parish	27.7	31.6	36.7	41.4	44.2	43.5

	1980	1990	2000	2010	2020	2024
Rapides Parish	28.3	31.3	35.5	36.9	39.3	38.4
Red River Parish	29.6	31.7	34.6	38.8	40.5	42.0
Richland Parish	29.5	32.1	35.8	37.6	40.4	39.5
Sabine Parish	32.1	34.5	38.2	40.7	43.4	42.4
St. Bernard Parish	28.4	32.5	36.6	32.9	35.0	37.0
St. Charles Parish	25.8	30.3	34.2	36.5	39.0	40.0
St. Helena Parish	26.2	30.5	35.0	39.5	42.3	42.4
St. James Parish	24.8	29.3	34.0	37.9	40.8	41.9
St. John the Baptist Parish	25.0	28.8	32.0	35.5	39.7	39.4
St. Landry Parish	26.9	30.8	34.6	36.8	39.6	37.4
St. Martin Parish	25.0	29.2	33.4	36.3	40.2	39.9
St. Mary Parish	25.3	29.6	34.3	37.5	40.2	40.5
St. Tammany Parish	28.3	32.5	36.3	39.3	41.1	41.1
Tangipahoa Parish	26.0	30.1	32.3	33.6	36.6	36.3
Tensas Parish	28.8	32.4	37.3	42.5	47.6	48.8
Terrebonne Parish	24.8	29.3	33.0	35.0	38.1	38.7
Union Parish	32.1	34.4	37.3	41.0	44.9	44.4
Vermilion Parish	28.0	31.4	35.1	36.4	39.3	38.7
Vernon Parish	23.3	24.7	28.3	29.6	32.8	33.1
Washington Parish	29.7	33.3	36.1	38.7	41.3	40.1
Webster Parish	32.2	34.7	38.1	40.3	43.3	42.1
West Baton Rouge Parish	25.4	30.4	34.0	35.8	37.4	38.1
West Carroll Parish	31.6	34.0	37.2	39.4	44.2	43.2
West Feliciana Parish	28.7	33.1	36.6	41.9	44.9	43.5
Winn Parish	31.2	33.4	36.2	39.5	40.1	40.7

Source: U.S. Census Bureau, 1980-2020 Decennial Censuses and Vintage 2024 Population Estimates

Table 2. Ratio Kids to Seniors 1980-2024 in Louisiana

	1980	1990	2000	2010	2020	2024
Acadia Parish	3.2	2.7	2.4	2.1	1.5	1.5
Allen Parish	2.6	2.2	2.1	1.8	1.5	1.5
Ascension Parish	4.9	4.0	3.9	3.2	2.2	1.8
Assumption Parish	4.1	2.9	2.6	1.8	1.1	0.9
Avoyelles Parish	2.4	2.0	2.0	1.7	1.2	1.3
Beauregard Parish	3.4	2.7	2.3	2.0	1.5	1.5
Bienville Parish	1.7	1.6	1.5	1.3	1.1	1.0
Bossier Parish	4.8	3.2	2.7	2.1	1.7	1.5
Caddo Parish	2.6	2.2	2.0	1.8	1.3	1.2
Calcasieu Parish	3.6	2.7	2.3	2.0	1.6	1.4
Caldwell Parish	2.0	1.9	1.8	1.6	1.2	1.2
Cameron Parish	3.6	3.1	2.7	1.9	1.3	1.0
Catahoula Parish	2.6	2.3	1.8	1.6	1.1	1.1
Claiborne Parish	1.6	1.4	1.5	1.2	0.9	0.8
Concordia Parish	3.3	2.5	1.9	1.7	1.3	1.1
De Soto Parish	2.0	2.1	2.0	1.7	1.3	1.2
East Baton Rouge Parish	4.4	3.0	2.6	2.2	1.5	1.4
East Carroll Parish	3.0	2.6	2.4	2.1	1.4	1.2
East Feliciana Parish	2.7	2.8	2.4	1.6	0.8	0.8
Evangeline Parish	2.9	2.4	2.3	2.0	1.4	1.4
Franklin Parish	2.2	2.0	1.8	1.6	1.3	1.2
Grant Parish	2.2	2.2	2.2	1.9	1.3	1.3
Iberia Parish	3.9	3.0	2.6	2.2	1.5	1.4
Iberville Parish	3.2	2.7	2.4	1.9	1.1	1.1
Jackson Parish	1.9	1.7	1.6	1.4	1.0	1.0
Jefferson Parish	4.4	2.6	2.1	1.7	1.2	1.1
Jefferson Davis Parish	3.1	2.5	2.2	1.8	1.5	1.4
Lafayette Parish	4.6	3.5	2.9	2.4	1.7	1.5
Lafourche Parish	4.7	3.2	2.4	2.0	1.5	1.3
LaSalle Parish	2.1	1.7	1.8	1.6	1.3	1.3
Lincoln Parish	2.2	2.2	2.0	1.8	1.4	1.3
Livingston Parish	5.1	3.8	3.5	2.8	1.9	1.7
Madison Parish	2.6	2.5	2.8	2.1	1.5	1.3
Morehouse Parish	2.5	2.1	1.8	1.6	1.1	1.1
Natchitoches Parish	2.4	2.3	2.2	1.8	1.2	1.3
Orleans Parish	2.5	2.1	2.3	1.9	1.4	1.0
Ouachita Parish	3.2	2.6	2.4	2.1	1.6	1.4
Plaquemines Parish	5.5	4.0	3.0	2.5	2.0	1.5
Pointe Coupee Parish	2.9	2.4	2.0	1.5	1.0	0.9

	1980	1990	2000	2010	2020	2024
Rapides Parish	3.0	2.4	2.1	1.9	1.4	1.4
Red River Parish	2.2	2.0	2.1	1.7	1.3	1.1
Richland Parish	2.2	2.0	1.8	1.8	1.3	1.2
Sabine Parish	2.0	1.7	1.6	1.4	1.1	1.0
St. Bernard Parish	4.3	2.4	1.8	2.8	2.3	1.7
St. Charles Parish	5.5	4.4	3.4	2.7	1.7	1.4
St. Helena Parish	3.0	2.6	2.3	1.7	1.1	0.9
St. James Parish	4.0	3.2	2.6	2.0	1.2	1.0
St. John the Baptist Parish	5.4	4.9	4.0	2.6	1.5	1.4
St. Landry Parish	3.2	2.6	2.2	2.0	1.4	1.5
St. Martin Parish	4.3	3.6	2.9	2.3	1.4	1.3
St. Mary Parish	4.8	3.4	2.7	2.0	1.4	1.2
St. Tammany Parish	4.5	3.4	2.8	2.0	1.3	1.2
Tangipahoa Parish	3.2	2.7	2.6	2.2	1.5	1.5
Tensas Parish	2.1	1.9	1.7	1.5	0.9	0.7
Terrebonne Parish	5.7	4.0	3.0	2.3	1.6	1.4
Union Parish	1.9	1.8	1.7	1.4	1.0	0.9
Vermilion Parish	2.9	2.4	2.1	2.1	1.5	1.4
Vernon Parish	5.0	5.1	3.7	2.9	2.0	1.7
Washington Parish	2.5	2.0	1.9	1.7	1.2	1.2
Webster Parish	2.0	1.7	1.6	1.4	1.1	1.1
West Baton Rouge Parish	4.4	3.3	2.9	2.3	1.7	1.5
West Carroll Parish	2.1	1.8	1.6	1.5	1.0	1.0
West Feliciana Parish	2.9	2.9	2.8	1.7	1.0	0.9
Winn Parish	2.1	1.8	1.8	1.6	1.1	1.0

Source: U.S. Census Bureau, 1980-2020 Decennial Censuses and Vintage 2024 Population Estimates

Table 3. Percent Population Under 18 1980-2024 in Louisiana

	1980	1990	2000	2010	2020	2024
Acadia Parish	34.4%	32.1%	29.8%	27.3%	25.4%	25.7%
Allen Parish	32.9%	28.8%	24.6%	22.9%	23.0%	23.1%
Ascension Parish	35.9%	32.0%	30.1%	28.7%	27.3%	25.7%
Assumption Parish	36.6%	31.8%	28.5%	24.6%	21.0%	19.7%
Avoyelles Parish	33.1%	29.6%	26.8%	24.4%	23.0%	23.9%
Beauregard Parish	33.2%	29.5%	27.5%	26.1%	24.8%	25.2%
Bienville Parish	30.1%	28.3%	27.3%	23.3%	22.4%	22.4%
Bossier Parish	32.4%	29.2%	28.0%	25.7%	25.5%	24.6%
Caddo Parish	30.3%	28.7%	26.8%	24.6%	23.3%	23.1%
Calcasieu Parish	31.5%	29.5%	27.4%	25.4%	24.7%	24.6%
Caldwell Parish	31.1%	28.8%	24.7%	23.4%	22.5%	22.2%
Cameron Parish	32.5%	30.4%	28.4%	24.2%	22.4%	21.7%
Catahoula Parish	32.6%	30.8%	25.8%	22.6%	22.0%	21.5%
Claiborne Parish	30.0%	25.3%	25.6%	19.7%	18.8%	18.8%
Concordia Parish	33.8%	30.8%	27.8%	25.1%	23.9%	22.9%
De Soto Parish	31.1%	29.8%	28.4%	24.9%	23.8%	23.7%
East Baton Rouge Parish	30.2%	27.5%	26.2%	23.6%	22.1%	22.5%
East Carroll Parish	38.8%	36.0%	30.3%	25.7%	20.9%	19.5%
East Feliciana Parish	31.3%	29.8%	25.7%	20.7%	17.2%	17.5%
Evangeline Parish	34.2%	31.5%	29.6%	27.0%	24.6%	24.2%
Franklin Parish	33.2%	30.9%	27.9%	25.6%	24.0%	25.0%
Grant Parish	31.5%	30.1%	28.3%	23.1%	20.9%	20.6%
Iberia Parish	34.5%	32.2%	30.0%	27.1%	24.5%	24.9%
Iberville Parish	33.1%	29.6%	26.2%	22.5%	20.4%	20.7%
Jackson Parish	30.5%	28.2%	25.3%	22.8%	21.6%	20.6%
Jefferson Parish	30.9%	26.8%	25.3%	22.5%	21.8%	22.3%
Jefferson Davis Parish	34.1%	31.3%	29.3%	26.6%	25.5%	25.0%
Lafayette Parish	30.8%	29.3%	27.4%	24.5%	23.9%	24.0%
Lafourche Parish	33.8%	30.0%	27.3%	24.6%	23.5%	22.5%
LaSalle Parish	30.2%	27.3%	26.1%	23.7%	21.8%	21.1%
Lincoln Parish	23.5%	23.1%	22.1%	20.6%	20.1%	19.7%
Livingston Parish	34.9%	31.4%	29.5%	27.6%	26.1%	25.2%
Madison Parish	37.3%	35.2%	32.6%	25.0%	25.8%	24.8%
Morehouse Parish	33.5%	31.0%	27.5%	24.7%	21.7%	22.7%
Natchitoches Parish	30.9%	29.7%	26.0%	24.3%	21.8%	22.4%
Orleans Parish	28.8%	27.6%	26.7%	21.3%	20.3%	19.5%
Ouachita Parish	32.0%	29.3%	27.9%	26.3%	25.0%	24.2%
Plaquemines Parish	35.1%	31.4%	29.2%	27.5%	26.3%	23.7%
Pointe Coupee Parish	33.5%	30.4%	27.3%	24.0%	21.7%	21.4%

	1980	1990	2000	2010	2020	2024
Rapides Parish	31.6%	29.0%	27.2%	25.8%	24.0%	24.8%
Red River Parish	32.7%	31.0%	30.1%	25.4%	25.0%	22.7%
Richland Parish	32.9%	31.2%	27.3%	25.5%	23.3%	23.3%
Sabine Parish	30.8%	28.4%	26.2%	24.4%	23.0%	22.5%
St. Bernard Parish	30.8%	27.0%	25.2%	25.6%	27.4%	25.4%
St. Charles Parish	34.9%	31.7%	30.3%	26.9%	24.8%	23.4%
St. Helena Parish	36.1%	31.3%	29.0%	24.7%	22.5%	19.7%
St. James Parish	35.5%	31.6%	29.5%	25.8%	23.2%	21.8%
St. John the Baptist Parish	36.1%	34.2%	31.2%	26.9%	23.5%	23.6%
St. Landry Parish	34.7%	31.9%	29.5%	27.2%	25.1%	26.3%
St. Martin Parish	36.1%	32.7%	29.5%	26.4%	23.9%	23.8%
St. Mary Parish	35.2%	32.5%	29.7%	25.4%	24.1%	24.7%
St. Tammany Parish	33.6%	30.5%	28.4%	25.7%	23.6%	23.1%
Tangipahoa Parish	32.5%	30.1%	27.7%	25.1%	23.8%	24.3%
Tensas Parish	34.5%	32.4%	26.5%	25.3%	22.0%	21.0%
Terrebonne Parish	35.8%	32.6%	29.2%	26.0%	24.7%	24.3%
Union Parish	29.8%	28.1%	25.7%	23.0%	21.2%	21.3%
Vermilion Parish	32.8%	30.8%	28.1%	26.7%	25.0%	25.0%
Vernon Parish	30.6%	29.3%	29.1%	27.7%	25.6%	25.6%
Washington Parish	31.4%	28.8%	26.8%	25.2%	23.1%	23.6%
Webster Parish	28.9%	27.5%	25.6%	23.6%	22.2%	22.5%
West Baton Rouge Parish	34.7%	29.8%	28.1%	24.9%	24.5%	24.1%
West Carroll Parish	31.5%	28.8%	25.6%	24.6%	22.8%	22.1%
West Feliciana Parish	20.6%	20.2%	20.3%	17.4%	16.5%	15.6%
Winn Parish	31.1%	27.7%	24.8%	22.5%	20.7%	19.7%

Source: U.S. Census Bureau, 1980-2020 Decennial Censuses and Vintage 2024 Population Estimates

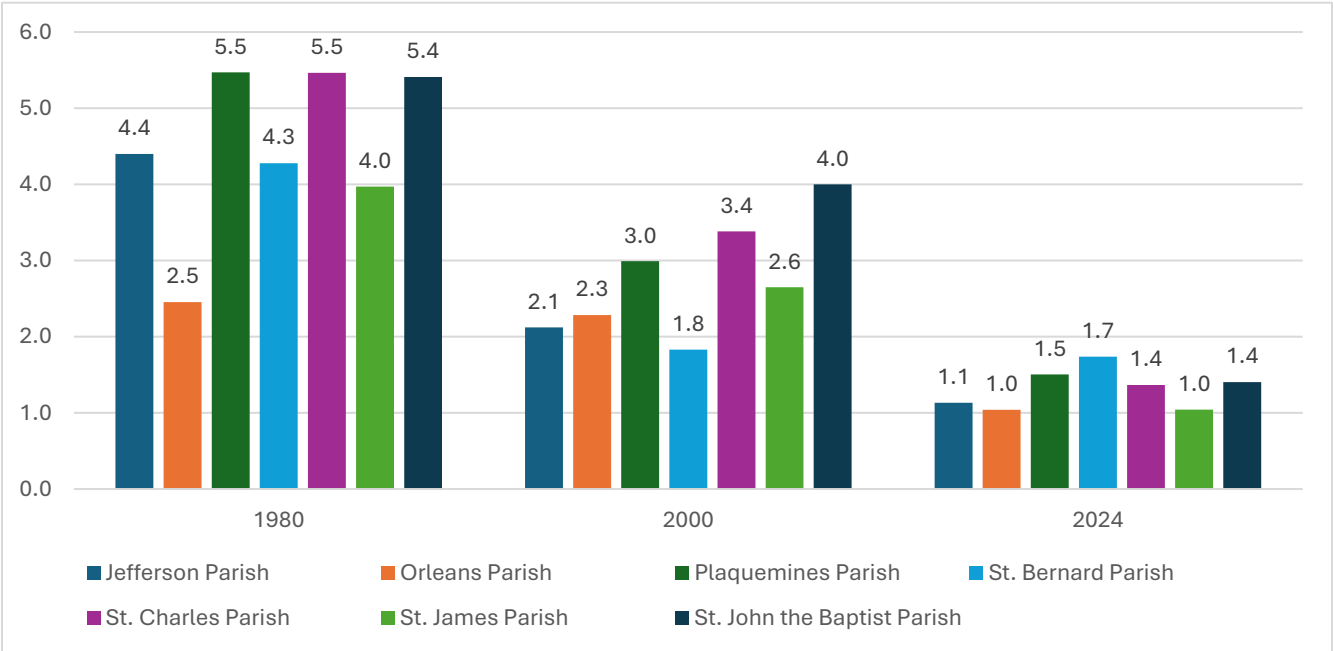
Table 4. Percent Population 65 or Older 1980-2024 in Louisiana

	1980	1990	2000	2010	2020	2024
Acadia Parish	10.8%	11.8%	12.3%	12.8%	17.3%	17.5%
Allen Parish	12.5%	12.8%	11.8%	12.9%	15.6%	15.0%
Ascension Parish	7.4%	8.0%	7.7%	8.9%	12.6%	14.0%
Assumption Parish	9.0%	10.8%	10.9%	13.4%	19.3%	21.5%
Avoyelles Parish	13.6%	14.9%	13.7%	14.4%	18.5%	18.8%
Beauregard Parish	9.9%	10.8%	11.9%	13.0%	16.7%	17.2%
Bienville Parish	17.3%	17.8%	17.6%	18.5%	21.3%	22.2%
Bossier Parish	6.8%	9.0%	10.4%	12.0%	14.8%	16.2%
Caddo Parish	11.6%	13.3%	13.7%	13.6%	18.3%	19.9%
Calcasieu Parish	8.7%	10.8%	11.9%	12.6%	15.6%	17.1%
Caldwell Parish	15.5%	15.2%	13.9%	14.8%	18.9%	18.8%
Cameron Parish	9.1%	9.7%	10.6%	12.9%	17.0%	21.1%
Catahoula Parish	12.6%	13.3%	14.4%	14.4%	20.2%	19.8%
Claiborne Parish	18.5%	17.7%	17.3%	16.0%	21.2%	23.5%
Concordia Parish	10.2%	12.5%	14.7%	14.5%	18.8%	20.5%
De Soto Parish	15.2%	14.5%	14.1%	14.4%	18.7%	19.6%
East Baton Rouge Parish	6.9%	9.2%	9.9%	10.9%	15.2%	16.1%
East Carroll Parish	12.9%	13.7%	12.5%	12.5%	14.8%	16.6%
East Feliciana Parish	11.8%	10.8%	10.6%	13.0%	20.4%	21.1%
Evangeline Parish	11.8%	13.3%	12.8%	13.2%	17.7%	16.8%
Franklin Parish	15.2%	15.3%	15.3%	16.3%	19.2%	20.1%
Grant Parish	14.5%	13.6%	12.7%	12.1%	15.8%	16.2%
Iberia Parish	8.8%	10.6%	11.4%	12.2%	16.5%	17.7%
Iberville Parish	10.2%	10.9%	10.7%	12.0%	18.0%	18.4%
Jackson Parish	16.1%	16.8%	16.2%	16.7%	21.0%	21.2%
Jefferson Parish	7.0%	10.1%	11.9%	13.6%	17.9%	19.6%
Jefferson Davis Parish	11.0%	12.7%	13.3%	14.5%	17.4%	18.2%
Lafayette Parish	6.7%	8.3%	9.5%	10.3%	14.5%	15.8%
Lafourche Parish	7.2%	9.3%	11.3%	12.5%	16.0%	17.7%
LaSalle Parish	14.1%	15.6%	14.8%	14.8%	17.3%	16.0%
Lincoln Parish	10.7%	10.7%	11.3%	11.3%	14.2%	14.9%
Livingston Parish	6.9%	8.3%	8.5%	9.9%	13.8%	14.5%
Madison Parish	14.4%	13.9%	11.6%	11.9%	17.3%	18.6%
Morehouse Parish	13.2%	14.5%	15.1%	15.4%	20.5%	21.4%
Natchitoches Parish	12.8%	13.1%	12.1%	13.5%	17.7%	17.7%
Orleans Parish	11.7%	13.0%	11.7%	10.9%	14.7%	18.8%
Ouachita Parish	10.0%	11.3%	11.8%	12.3%	15.5%	16.7%
Plaquemines Parish	6.4%	7.8%	9.8%	11.2%	13.5%	15.7%
Pointe Coupee Parish	11.4%	12.8%	13.9%	15.5%	21.5%	23.6%

	1980	1990	2000	2010	2020	2024
Rapides Parish	10.6%	12.0%	13.1%	13.7%	17.6%	17.9%
Red River Parish	14.8%	15.5%	14.4%	15.2%	19.2%	21.2%
Richland Parish	15.0%	15.6%	15.0%	14.4%	18.0%	19.3%
Sabine Parish	15.1%	16.5%	16.5%	17.2%	21.9%	22.2%
St. Bernard Parish	7.2%	11.3%	13.8%	9.2%	12.0%	14.6%
St. Charles Parish	6.4%	7.2%	9.0%	9.9%	14.7%	17.1%
St. Helena Parish	12.1%	12.2%	12.5%	14.1%	19.6%	22.4%
St. James Parish	8.9%	9.8%	11.1%	12.9%	18.6%	20.9%
St. John the Baptist Parish	6.7%	7.0%	7.8%	10.3%	16.2%	16.8%
St. Landry Parish	10.7%	12.2%	13.4%	13.7%	18.0%	17.5%
St. Martin Parish	8.3%	9.1%	10.1%	11.7%	17.1%	18.3%
St. Mary Parish	7.3%	9.4%	11.0%	12.9%	17.3%	19.8%
St. Tammany Parish	7.5%	8.9%	10.0%	12.7%	18.3%	19.4%
Tangipahoa Parish	10.3%	11.1%	10.6%	11.4%	15.7%	15.9%
Tensas Parish	16.1%	16.9%	15.5%	17.3%	24.6%	30.1%
Terrebonne Parish	6.2%	8.2%	9.7%	11.2%	15.5%	17.0%
Union Parish	15.9%	15.8%	14.9%	16.5%	21.6%	23.7%
Vermilion Parish	11.4%	13.1%	13.5%	12.9%	16.9%	17.4%
Vernon Parish	6.1%	5.8%	7.9%	9.4%	13.1%	14.7%
Washington Parish	12.5%	14.3%	14.3%	14.5%	19.4%	20.2%
Webster Parish	14.6%	16.1%	16.3%	16.7%	21.1%	21.4%
West Baton Rouge Parish	7.9%	9.1%	9.7%	11.0%	14.4%	15.9%
West Carroll Parish	15.1%	15.9%	15.5%	16.8%	22.6%	22.4%
West Feliciana Parish	7.0%	6.9%	7.2%	10.2%	16.0%	16.6%
Winn Parish	14.8%	15.2%	14.0%	14.4%	18.7%	19.4%

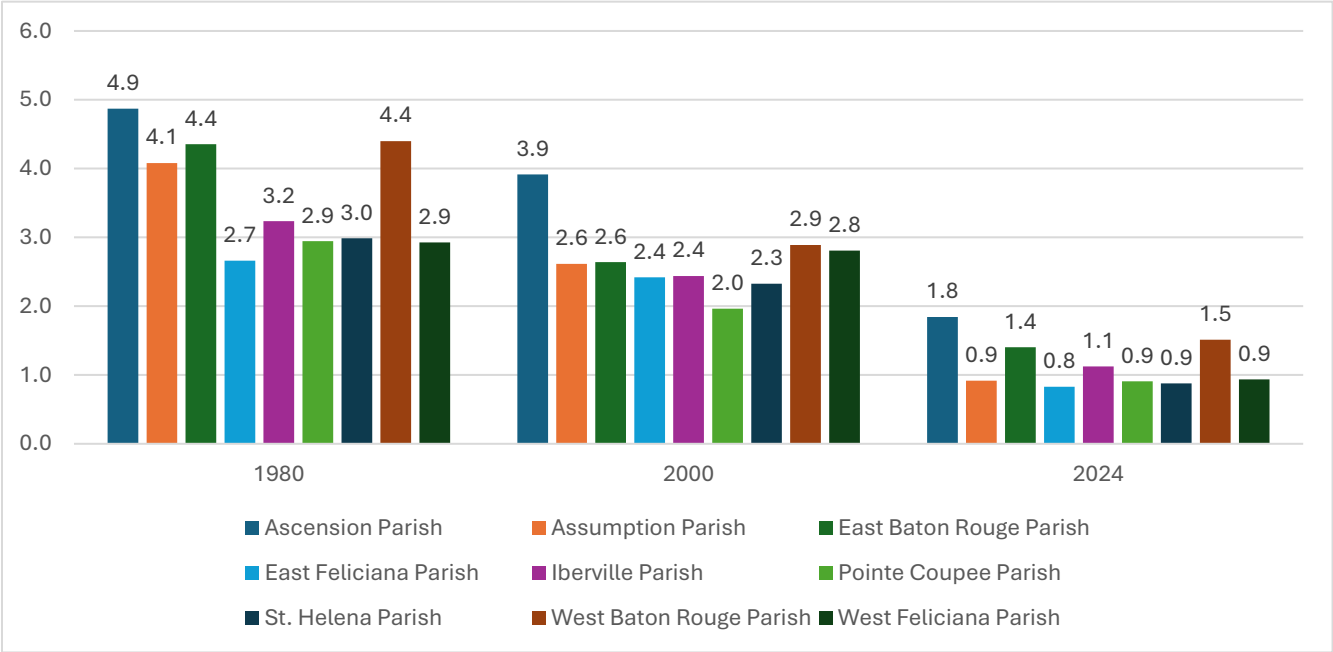
Source: U.S. Census Bureau, 1980-2020 Decennial Censuses and Vintage 2024 Population Estimates

Figure 7. New Orleans-Metairie MSA Children to Seniors Ratio 1980, 2000, & 2024



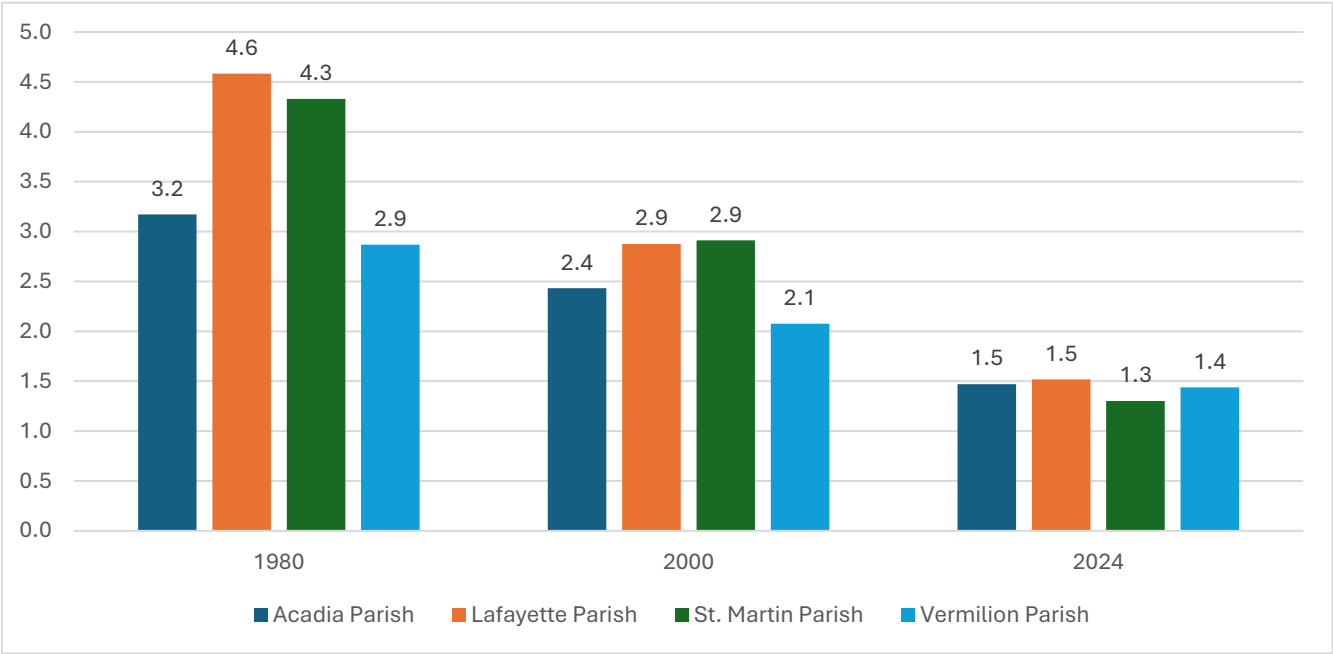
Source: U.S. Census Bureau, 1980 & 2000 Decennial Censuses and Vintage 2024 Population Estimates

Figure 8. Baton Rouge MSA Children to Seniors Ratio 1980, 2000, & 2024



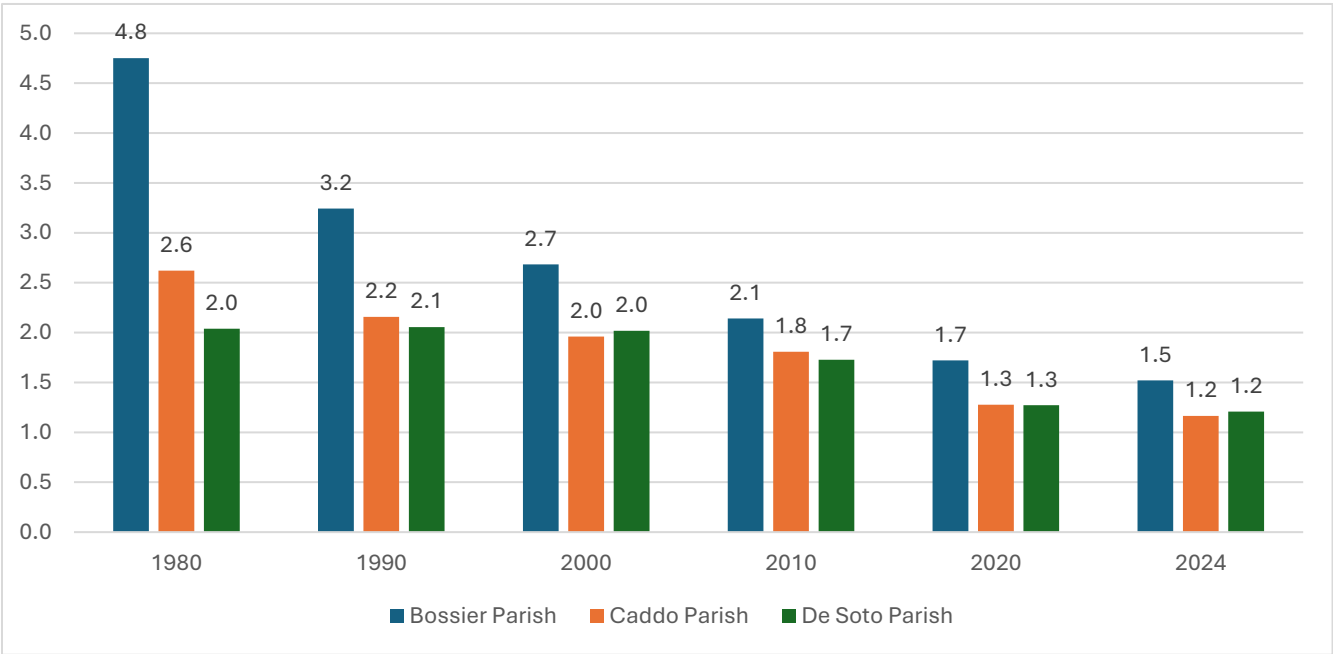
Source: U.S. Census Bureau, 1980 & 2000 Decennial Censuses and Vintage 2024 Population Estimates

Figure 9. Lafayette MSA Children to Seniors Ratio 1980, 2000, & 2024



Source: U.S. Census Bureau, 1980 & 2000 Decennial Censuses and Vintage 2024 Population Estimates

Figure 10. Shreveport-Bossier City MSA Children to Seniors Ratio 1980, 2000, & 2024



Source: U.S. Census Bureau, 1980 & 2000 Decennial Censuses and Vintage 2024 Population Estimates