



**[explore.LSUS.edu](https://explore.LSUS.edu)**



LSUS does not discriminate on the basis of race, creed, color, marital status, sexual orientation, gender identity, gender expression, religion, sex, national origin, age, mental or physical disability, or veteran's status in its programs and activities.

Stay Close.

GO  
FAR.

*Freshman Guide*



**LSUS**  
SHREVEPORT

[LSUS.edu](http://LSUS.edu)

# Events & SERVICES

Week of Welcome Fair  
Color Run  
Fall Fest  
Greek Recruitment  
Intramural and Recreational Sports  
International Student Week  
Freshmen Convocation  
Homecoming Week  
Miss Black & Gold  
Miss LSUS  
Trunk or Treat  
Food Drive  
Holiday Tree Lighting Ceremony  
Spring Fling  
Diversity, Inclusion,  
& Community Engagement (DICE)  
Food Pantry  
Mental Health Services  
Pioneer Heritage Center  
Baptist Collegiate Ministry (BCM)  
Stacks Coffee Shop

## FOLLOW US ON SOCIAL MEDIA:



LSUS Admissions



Isusadmissions



Isusadmissions



Isusrecruitment

## APPLY HERE:



[apply.LSUS.edu](https://apply.LSUS.edu)







**Starting a**  
*Successful Career*  
**is closer than  
you think.**

# Majors & CONCENTRATIONS



## BACHELOR OF ARTS

---

### ENGLISH

Literary Studies  
Writing in Multiple Media

### HISTORY

Generalist  
Political Science

### SOCIOLOGY

## BACHELOR OF CRIMINAL JUSTICE

---

### CRIMINAL JUSTICE

Forensic Sciences  
Generalist  
Political Science  
Security Studies

## BACHELOR OF FINE ARTS

---

### DIGITAL ARTS

## BACHELOR OF GENERAL STUDIES

---

### GENERAL STUDIES

Applied Science  
Humanities  
Natural Science  
Social Sciences

## BACHELOR OF SCIENCE

---

### ACCOUNTING

Public Accounting

### BIOLOGICAL SCIENCES

Cellular & Molecular  
Environmental Science  
Field & Organismal  
Forensic Science

### CHEMISTRY

ACS-Certified  
Biochemistry

### COMPUTER SCIENCE

Cyber Security & Networking  
Digital & Interactive Design  
Information Systems  
Software Development

## EARLY CHILDHOOD EDUCATION

## ELEMENTARY EDUCATION

### FINANCE

Financial Analysis  
Financial Planning  
Insurance  
Real Estate

## GENERAL BUSINESS ADMINISTRATION

Entrepreneurship  
International Business



# Majors & CONCENTRATIONS

## MANAGEMENT & ADMINISTRATION

- Business Intelligence
- Business Law
- Human Resource Management
- International Business
- Management Information Systems

## MARKETING

- Advertising Design
- Data Analytics
- Hospitality
- International Business
- Sales

## MASS COMMUNICATION

- Digital/Broadcast Media
- Journalism/Public Relations

## MATHEMATICS & PHYSICS

- Applied Physics
- Mathematics
- Theoretical Physics

## PSYCHOLOGY

- Applied Behavior Analysis

## PUBLIC HEALTH

- Exercise Science
- Health & Fitness Management
- Health Behavior
- Nonprofit Administration
- Pre-Occupational Therapy
- Pre-Physical Therapy
- Strength & Conditioning

## SECONDARY EDUCATION

- English Education
- Mathematics Education
- Science Education
  - Biology
  - Chemistry
  - Physics
- Social Studies Education

## PRE-PROFESSIONAL & PREPARATORY STUDIES

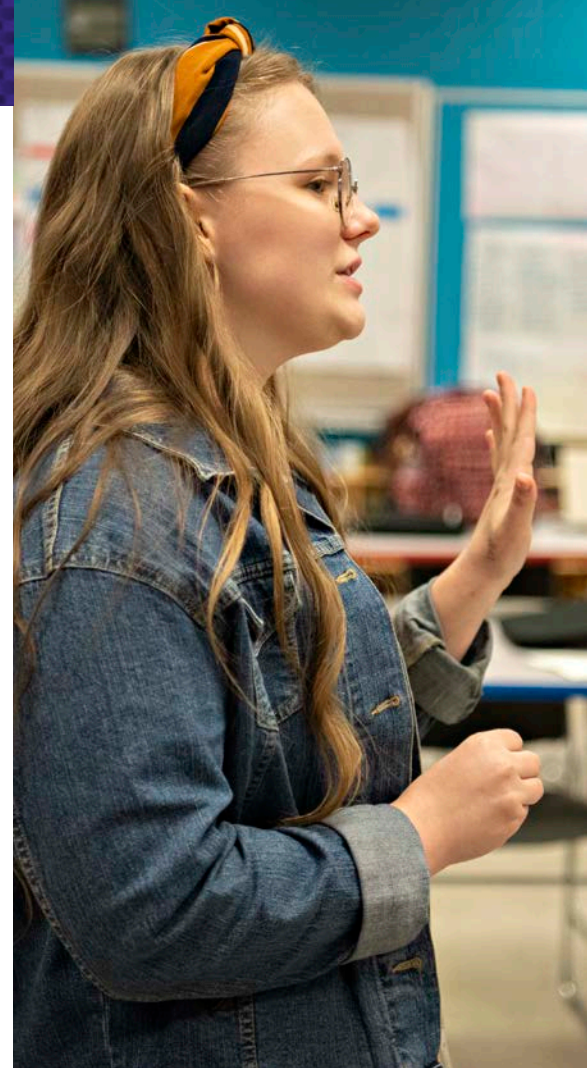
---

- Pre-Animal Science
- Pre-Cardiopulmonary Science
- Pre-Dental Hygiene
- Pre-Engineering
- Pre-Forestry and Wildlife
- Pre-General Agriculture
- Pre-Medical Laboratory Studies
- Pre-Nursing
- Pre-Occupational Therapy
- Pre-Optometry
- Pre-Pharmacy
- Pre-Physical Therapy
- Pre-Physician Assistant
- Pre-Radiologic Technology
- Pre-Rehabilitation Counseling
- Pre-Veterinary Medicine

## UNDERGRADUATE CERTIFICATE PROGRAMS

---

- Artificial Intelligence
- Business Fundamentals
- Business Law
- Cyber Security and Networking
- Nonprofit Administration
- Small Business Management



## REQUIREMENTS FOR ALL FIRST-TIME FRESHMEN

- Meet **ONE** of the following:
  - Core GPA of 2.0 or higher
  - Associate Degree or 12 early college academic credit hours with a 2.0 GPA or higher
  - ACT Composite of 20 or SAT Composite of 1030

### AND

- Meet minimum placement requirements for College Level Math **OR** College Level English
  - Minimum ACT English score of 18 or Minimum SAT ERW score of 500
  - Minimum ACT MATH core of 19 or Minimum SAT Math score of 510

### ADDITIONAL REQUIREMENT OPTIONS (MUST MEET ONE OF THE FOLLOWING)

#### Option #1

- Have completed or be on track to complete the Louisiana Board of Regents High School Core Curriculum with a cumulative GPA of 2.0 or higher

#### Option #2

- Have completed or be on track to complete 17-18 Units of the Louisiana Board of Regents High School Core Curriculum with a cumulative GPA of 2.0 or higher
- Meet **ONE** of the following:
  - Core GPA of 2.5
  - ACT Composite of 23
  - Institutional early college requirement with a GPA of 2.25

#### Option #3

- Have completed one of the following:
  - HiSet with 15 on any sub-test and 4 on HiSet Essay
  - NRS: Score level 6 on NRS approved assessment (Adult Learners only)

#### Option #4

- Graduation from a non-US Secondary Institution and have completed a recognized secondary program comparative to a U.S. High School preparatory core
- Demonstrate English Language Proficiency (Students from non-English-speaking countries only)



# SCHOLARSHIPS

## PURPLE & GOLD SCHOLARSHIP

- \$1,000 Per Semester
- 20-21 ACT and 2.5 High School GPA (unweighted)
- Application deadline is January 31.

## SHREVEPORT SCHOLARSHIP

- \$1,500 Per Semester
- 22-25 ACT and 3.0 High School GPA (unweighted)
- Application deadline is July 1.

## OUT-OF-STATE FEE WAIVER/SCHOLARSHIP REQUIREMENTS

Applicants who are residents in other states may be awarded an out-of-state scholarship if they meet the following criteria:

### First-Time Freshmen:

- ACT of 20 (or equivalent SAT), **or** Cumulative High School GPA of a 2.0 or higher
- Must have no need for remedial coursework.
- Must be a United States Citizen or Permanent Resident.

## ADDITIONAL INFORMATION

- The application deadline is December 1 for spring enrollment.
- Your complete admissions application is your scholarship application. No additional application is required.
- Privately funded scholarship opportunities are available through the LSUS Foundation. Visit [lsus.academicworks.com](http://lsus.academicworks.com).

To check if you are eligible for more scholarships, visit [lsus.academicworks.com](http://lsus.academicworks.com).

## RED RIVER SCHOLARSHIP

- \$1,800 Per Semester
- 26-29 ACT and 3.0 High School GPA (unweighted)
- Application deadline is July 1.

## LOUISIANA SCHOLARSHIP

- Tuition and fees, plus \$1200 on-campus housing credit
- 30 ACT and 3.5 High School GPA (unweighted)
- Application deadline is July 1.

# LSUS FOUNDATION

## Scholarships

**Application Deadline  
January 31**

## SCHOLARSHIPS FOR TOP SCHOLARS

- \$2,000 Per Year
- Renewable up to 4 years
- 28 ACT and 3.5 High School GPA
  - Dr. Lacy and Edie Williams Endowed Scholarship
  - John and Ann Ballard Endowed Scholarship
  - Race to Win Endowed Scholarship
  - Bobbie Cate Hicks Endowed Scholarship

## SCHOLARSHIPS FOR FIRST-GENERATION COLLEGE STUDENTS

- \$2,000 per year
- Renewable up to 4 years
- 22 ACT and 3.0 GPA
  - Dr. Phillip & Alma Rozeman Endowed Scholarship
  - The John & Cheryl Good Charitable Foundation Endowed Scholarship
  - Dalton J. & Sugar Woods Endowed Scholarship
  - Salvadore & Kendra Miletelio Endowed Scholarship
  - Herman & Renae Chandler Endowed Scholarship
  - Michael and Tracie Woods Endowed Scholarship
  - Alta & John Franks Foundation Endowed Scholarship
  - Michael and Tracie Woods Endowed Scholarship (\$4,000 per year)

## RUTH HERRING NOEL SCHOLARSHIPS

- \$4,000/year
- Renewable up to 4 years
- 22 ACT and 3.5 High School GPA

## ADDITIONAL SCHOLARSHIPS

Over 100 scholarships are available through LSUS with awards up to \$2,000 per year.





## STATE RESIDENT

Tuition:	\$2,761.20
Fees:	+ \$998.16
<hr/>	
<b>Cost Per Semester:</b>	<b>\$3,759.36*</b>

## OUT-OF-STATE

Tuition:	\$2,761.20
Fees:	\$998.16
Out-of-State Fee:	+ \$6,577.08
<hr/>	
<b>Cost Per Semester:</b>	<b>\$10,336.44*</b>

\*Subject to change prior to fall semester.

## STUDENT SUCCESS CENTER

The Student Success Center is a comprehensive support resource designed to help students achieve academic success. The center provides a positive and supportive environment where students can confidently develop skills needed to excel in college and beyond.

Free resources include:

- Peer-to-Peer Tutoring
- 24/7 Online Tutoring
- Academic Coaching Sessions
- Academic Workshops
- Online Academic Success Resources

## CYBER COLLABORATORY

The LSUS Cyber Collaboratory is a state-of-the-art, immersive-learning space where students, faculty and industry partners can come together to discuss, research and create solutions to everyday problems utilizing cutting-edge technology. Students will be able to participate in creative, hands-on technology learning experiences with both their faculty mentors and with industry partners, giving them the competitive edge upon entering the job market.





## **PILOT EDUCATIONAL CENTER**

The Pilot Educational Center is designed to encourage peer collaboration for education-related coursework.

Free resources include:

- Praxis lab and study materials
- Children and young adult literature
- 75" mounted computer for presentations and meeting
- Die cut, Silhouette, and Cricut machines



## **IDEA SPACE**

The LSUS Idea Space is designed around the Stanford Design-Thinking model where faculty teach students how to systematically problem-solve through creative thinking in a minimally technological environment. One of the critical key competencies employers are looking for in graduates in the Digital Economy is for students to be creative in their problem-solving. Through this center and the corresponding courses, LSUS is teaching students how to be critical-thinkers and how to problem-solve.



## COUNSELING SERVICES

The mission of LSUS Counseling Services is to serve LSU Shreveport's diverse campus community by providing mental health services and wellness support services that assist students in achieving their academic and life goals while enhancing their personal growth and wellbeing. Counseling Services provides personal counseling, peer education, and mental health resources to personal development workshops, yoga and meditation, and diversity trainings.

## HUMAN PERFORMANCE LAB

The Human Performance Lab consists of three different rooms — the Exercise Science Lab, Motion Analysis Lab, and Motor Behavior Lab — for students to attain hands-on experience in the most cutting-edge human performance research lab in the country. Lab involvement enables students to earn nationally accredited certifications, including:

- Tactical Strength and Conditioning Coach (NSCA)
- Certified Exercise Physiologist (ACSM)
- Certified Strength and Conditioning Coach (NSCA)

## PILOTS POINTE APARTMENTS

Pilots Pointe is here to provide you with everything you need for a great college experience. Our on-site team strives to offer you nothing but the best when it comes to service. That's why we're intentional about creating a relationship with every resident. We know how hard college is, so we do everything possible to ease the stress. With our convenient location, online resident portal, and 24/7 emergency maintenance, you'll never have to worry.



# Athletics & CLUB SPORTS



**MEN'S  
BASKETBALL**



**WOMEN'S  
BASKETBALL**



**MEN'S  
SOCCER**



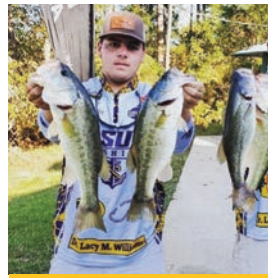
**WOMEN'S  
SOCCER**



**MEN'S  
BASEBALL**



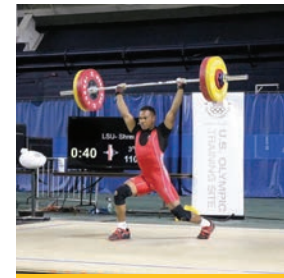
**WOMEN'S  
TENNIS**



**BASS FISHING**



**ESPORTS**



**WEIGHTLIFTING**





# Athletics & CLUB SPORTS

## JOIN THE TEAM

The Athletic programs at LSUS have earned a notable reputation as one of the top NAIA programs in the country for our commitment to athletics, education and our community. Whether you're looking to make your mark on the field, or head up the cheering section, our competitive athletic programs offer something for everyone!



*Extra Perk!*

**Students get  
into games FREE!**

## Shoutouts!

### BASEBALL

- 6 Conference Regular-Season Championships
- 12 Conference Tournament Championships
- 19 All-American Selections
- 15 Consecutive Trips to the NAIA National Tournament Opening Round
- 3 Trips to the NAIA World Series

### WOMEN'S TENNIS

- 3.6 Team GPA
- New Playing Surface

### MEN'S BASKETBALL

- 6 Conference Regular-Season Championships
- 8 Conference Tournament Championships
- 28 All-American Selections
- 16 Consecutive Trips to the NAIA National Tournament
- 2 NAIA Fab Four Appearances

### WOMEN'S BASKETBALL

- 1 Conference Regular-Season Championship
- 3 Conference Tournament Championships
- 12 All-American Selections
- 9 Trips to the NAIA National Tournament

### MEN'S SOCCER

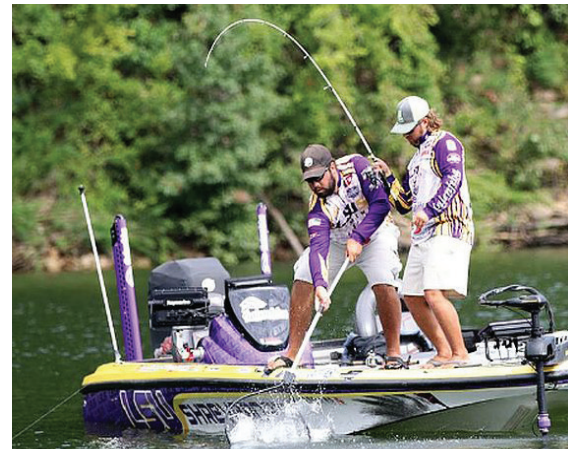
- 1 Conference Regular-Season Championship
- 4 All-American Selections
- 1 Trip to the NAIA National Tournament

### WOMEN'S SOCCER

- 1 Conference Regular-Season Championship
- 1 Conference Tournament Championship
- 1 All-American Selection
- 3 Trips to the NAIA National Tournament

### STUDENT-ATHLETE SUCCESS

- 50% of Student-Athletes had over a 3.0 GPA.
- 50% of Teams had over a 3.0 GPA.
- Champions of Character® Five-Star Gold Institution







# STUDENT *Life*



## CLUBS/ACTIVITIES

- Academic & Professional Clubs
- Faith-Based Organizations
- Special Interests
- Sports Clubs
- Greek Life
- Honor Societies

## INTRAMURALS/REC SPORTS

- Fall League
- Spring League
- Flag Football
- 5v5 Basketball
- Volleyball
- Softball and Soccer

## SPECIAL EVENTS

- Ping-Pong Tournaments
- Canoeing and Paddleboarding
- Fitness Challenges



# READY TO *Go Far?*



## STAY CLOSE. GO FAR.

LSUS graduates are trail blazers. Our alumni network consists of researchers, social workers, data scientists, doctors, computer programmers, teachers, engineers and more.

**We believe your future is just as big.**

Through a combination of high-demand academic programs, real-world learning and state-of-the-art facilities, LSUS students have endless possibilities to achieve the career of their dreams.

## WHAT'S NEXT?

- **APPLY:** Submit your application! Go to [apply.lsus.edu](https://apply.lsus.edu).
- **SPECIAL EVENTS:** Come visit LSUS during one of our exciting Pilot Preview Days or other special events! Go to [visit.lsus.edu](https://visit.lsus.edu).
- **TAKE A CAMPUS TOUR:** To schedule a tour or virtual admissions appointment, go to [visit.lsus.edu](https://visit.lsus.edu). You can also call **(318) 797-5061** or email [recruitment@lsus.edu](mailto:recruitment@lsus.edu). Tours can be scheduled Monday through Friday at 10AM or at 2PM.



## GET STARTED

1. Go to [apply.lsus.edu](https://apply.lsus.edu).
2. Click the "Start Application" button and select "Undergraduate Application"
3. Send your transcript and ACT or SAT scores.

## SCHOOL CODES

ACT: 1593

SAT: 6355

FAFSA: 002013

## NEED TO TAKE THE ACCUPLACER?

Take the Accuplacer at LSUS! We offer the Accuplacer exam through the LSUS Testing Center. Contact [placementtesting@lsus.edu](mailto:placementtesting@lsus.edu), or call **(318) 798-4177** to schedule an appointment.

