



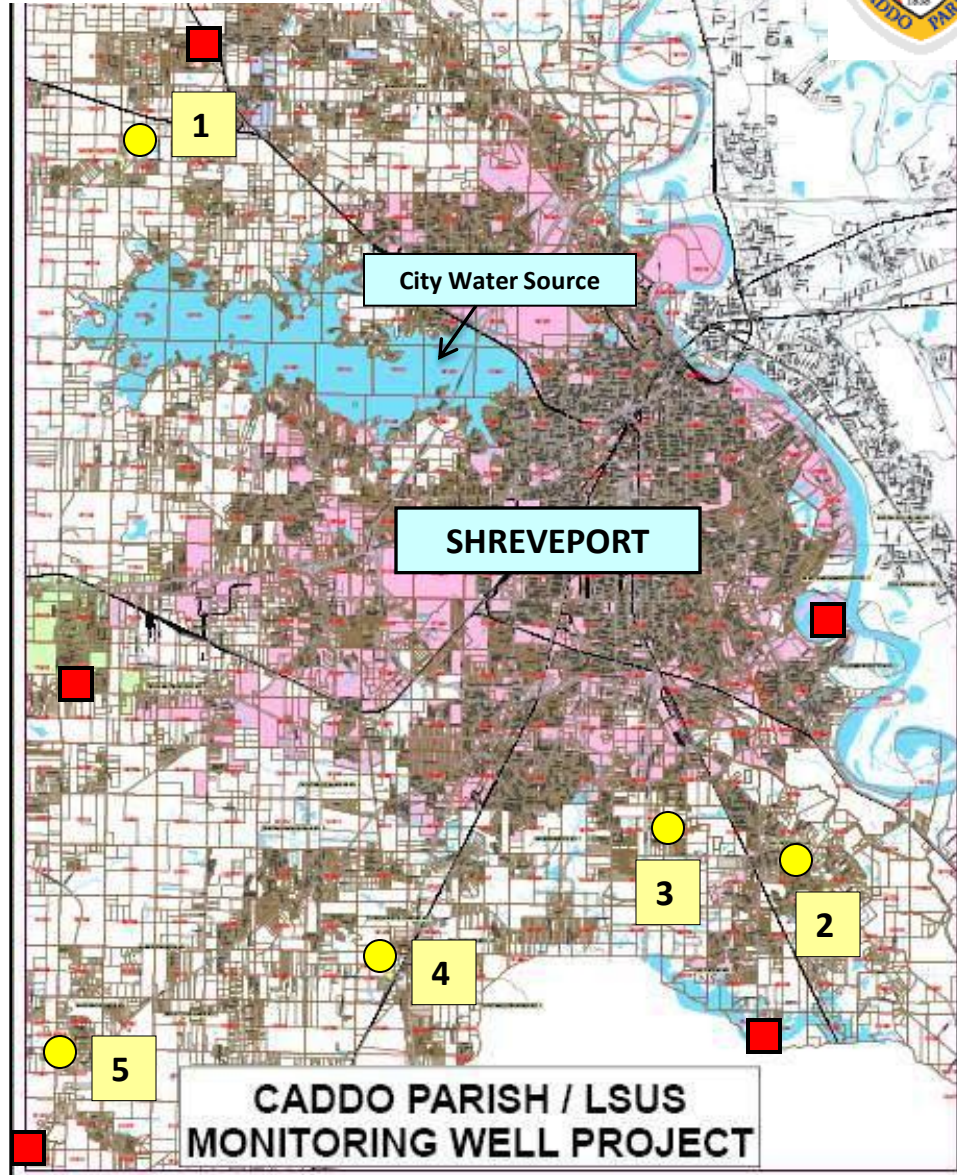
Louisiana State University in Shreveport
Red River Watershed Management Institute
In cooperation with the Parish of Caddo

Project Report: Caddo Parish Groundwater Monitoring Project

Update for August 2011, report completed August 12, 2011
Caddo Parish Monitoring Wells
Provisional Data, subject to revision



Caddo Parish/ LSUS Carrizo-Wilcox Monitoring Well Project



Monitoring Well Sites

1

Walter Jacobs Park

2

Hannah's Park

3

Mayo Road

4

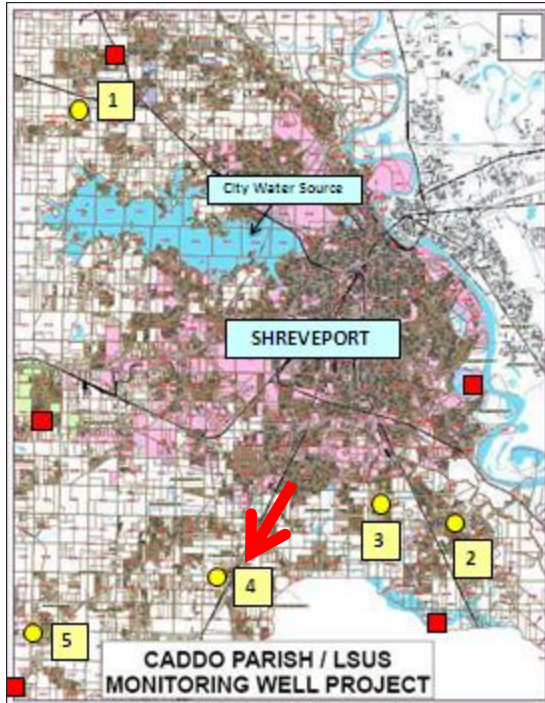
Keithville

5

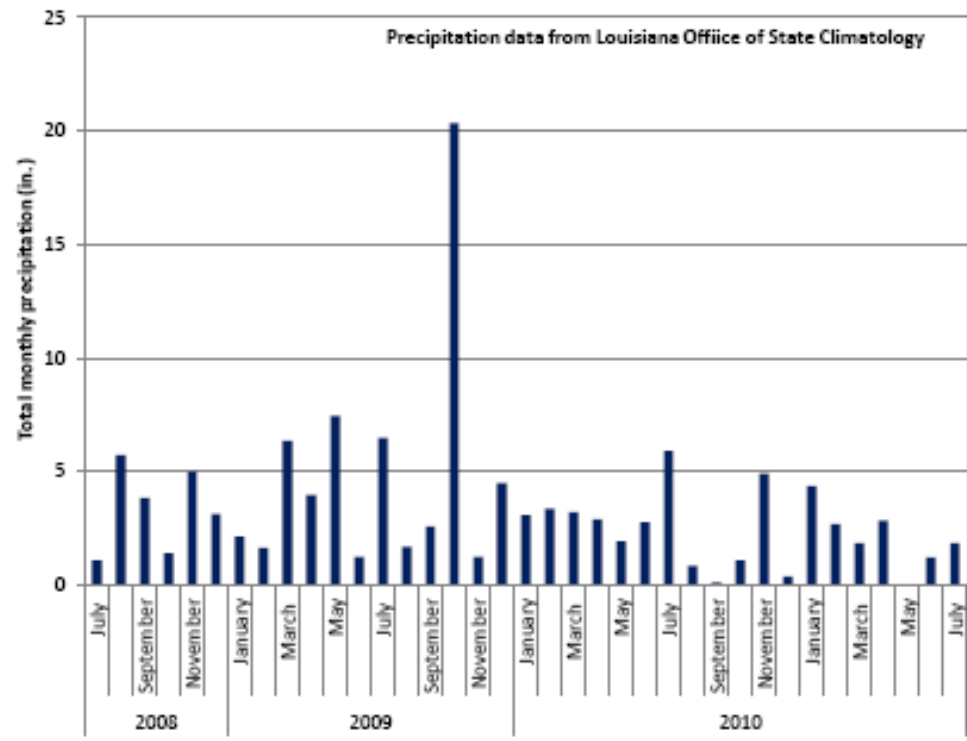
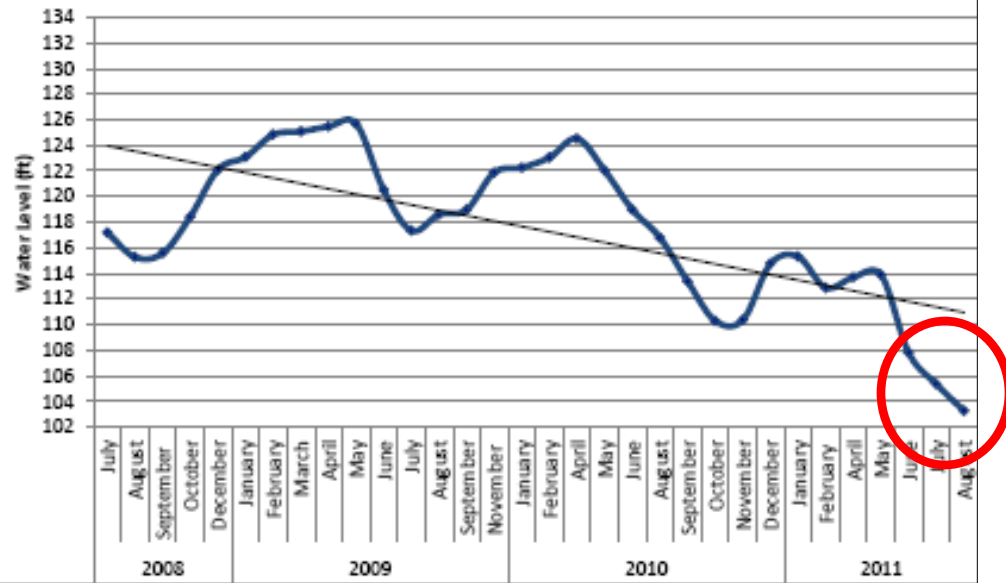
Springridge



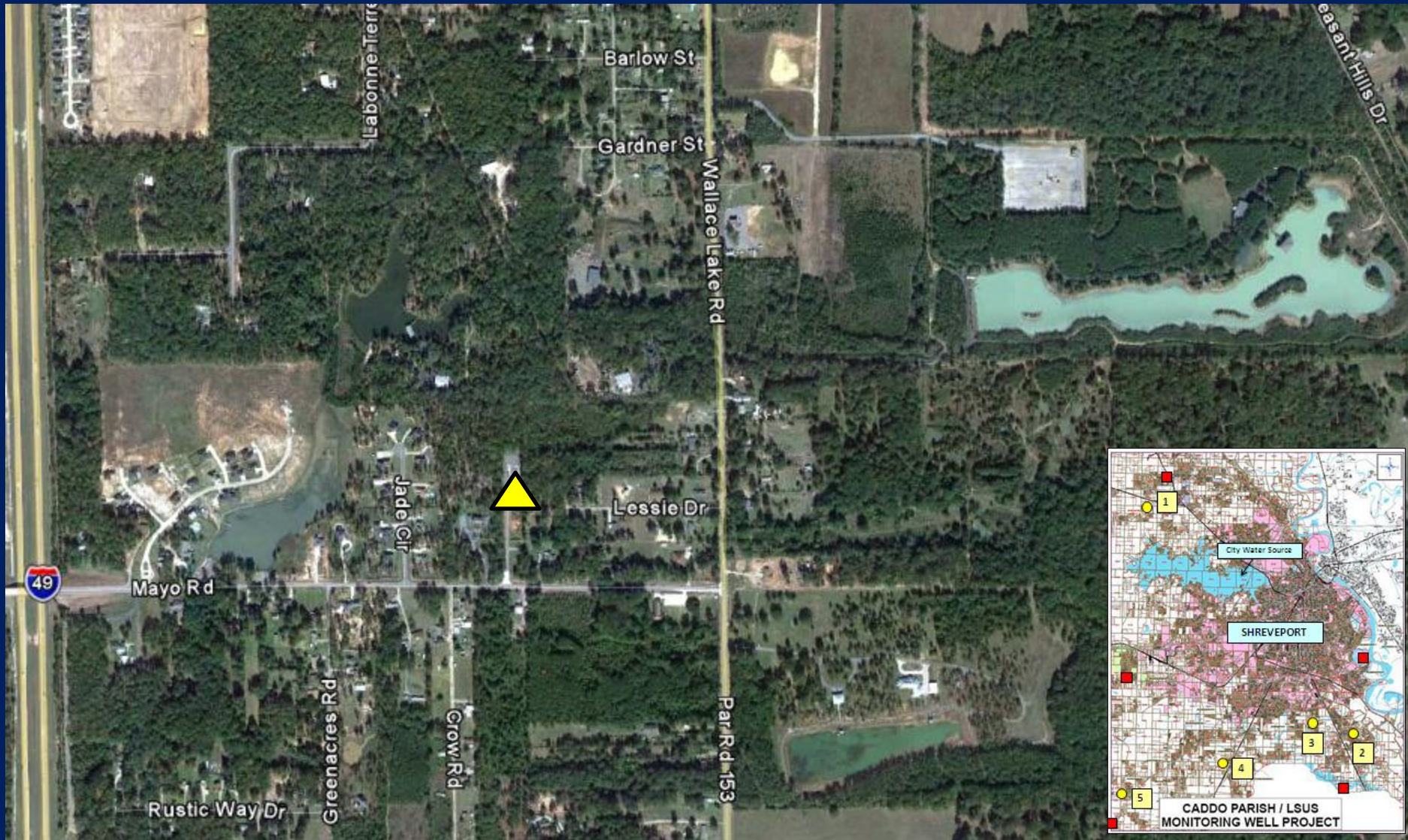
Phase II Wells drilled in 2010



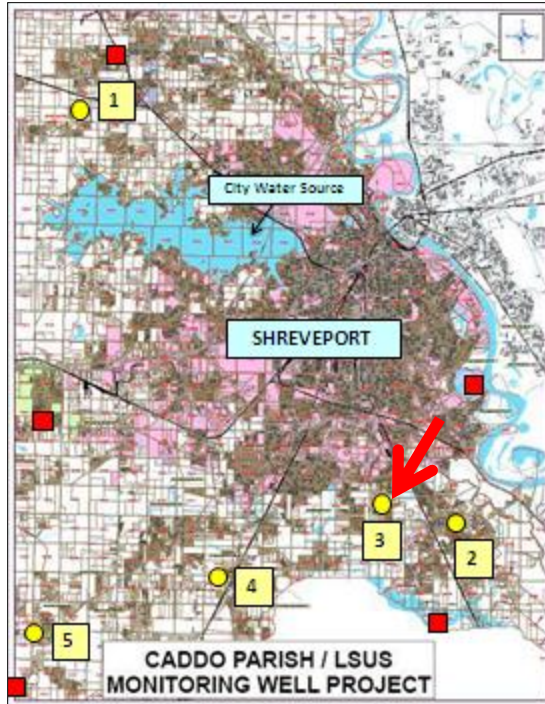
Keithville



Mayo Road Monitoring Well

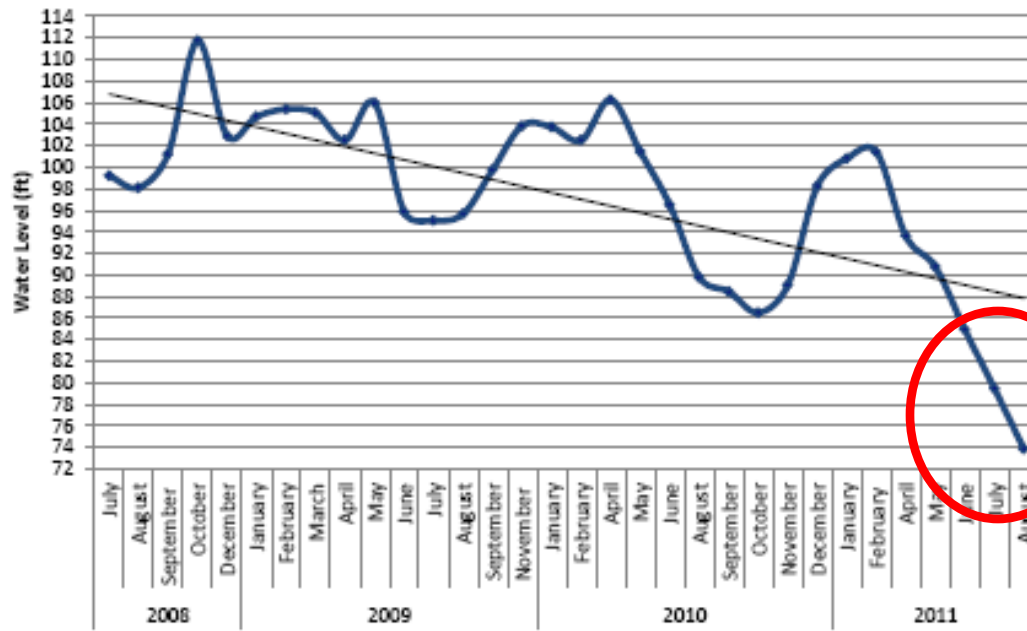


LSUS/ Caddo Parish
Groundwater Monitoring Well

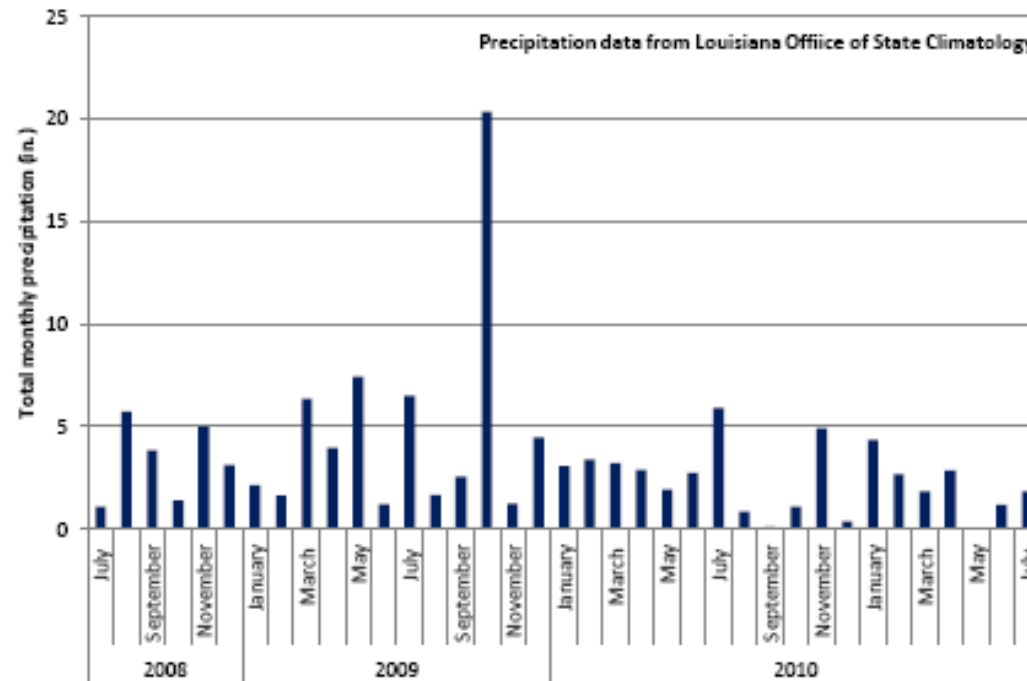


VICINITY MAP

Mayo Road



Precipitation data from Louisiana Office of State Climatology





Water Level Change – July to August, 2011

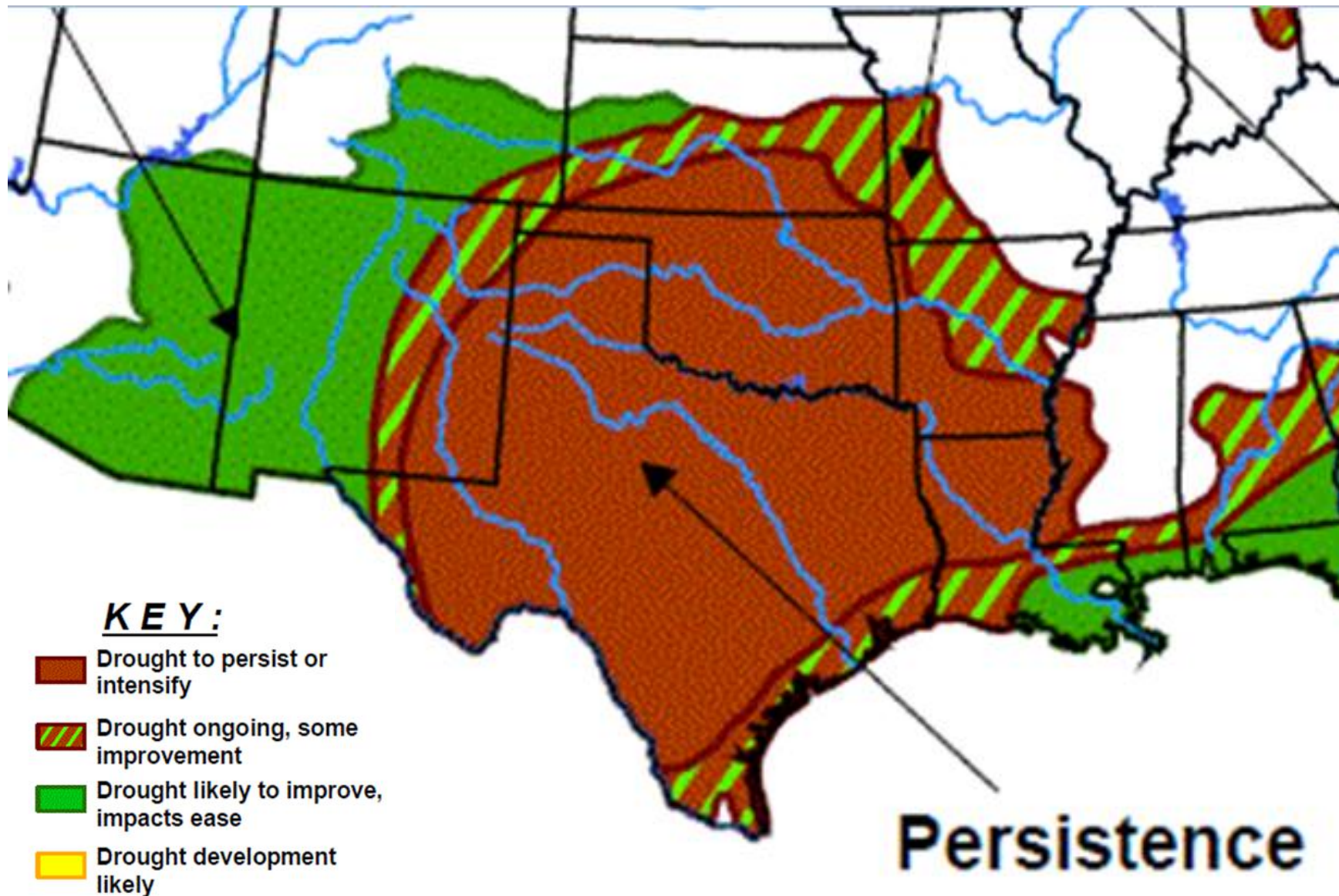
Monitoring Well	Amount change since last month (ft)
Walter Jacobs	-0.25
Hannah's Park	-1.56
Mayo Rd.	-5.59
Keithville Compactor	-2.1
South Camp	-0.5
Blanchard Trash Compactor	-0.22
Greenwood	-3.55
Eddie Jones Park	-0.99
Wallace Lake	-0.91



U.S. Seasonal Drought Outlook

Drought Tendency During the Valid Period

Valid August 4, 2011 - October 31, 2011
Released August 4, 2011



DEPARTMENT OF NATURAL RESOURCES Scott A. Angelle, Secretary

STATE OF LOUISIANA

[ABOUT DNR](#) | [OFFICES](#) | [MEDIA CENTER](#) | [CONTACT US](#)



Search...



[Louisiana.gov](#) > [Department of Natural Resources](#)

Text Size:

Feedback

[Oil & Gas](#)

[Energy](#)

[Mineral Resources](#)

[Conservation](#)

[Coastal Management](#)

CALENDAR

◀ August 2011 ▶						
Su	Mo	Tu	We	Th	Fr	Sa
31	1	2	3	4	5	6

TOP STORIES

[DNR Declares Ground Water Emergency in Parts of Southern Caddo Parish](#) *Water Conservation Measures Prescribed to Mitigate Further Stress to Aquifers*

Friday, August 19, 2011

BATON ROUGE - Today, the Louisiana Department of Natural Resources Office of Conservation issued an Emergency Order in response to effects of the extended drought conditions on the water supply in southern Caddo parish.

[Emergency Order NO. ENV 2011-GW014](#) declares a temporary ground water emergency in accordance with LSA R.S. 38:3097.3.C(8) and the August 15, 2009 Ground Water Emergency Response Contingency Plan to implement water conservation measures and limit use of Carrizo-Wilcox and Upland Terrace aquifer system ground water withdrawn from industrial, irrigation, domestic and public supply water wells located in certain areas in South Caddo Parish during extended extraordinary drought conditions.

Order No. ENV2011-GW014
Keithville Area
Exhibit "A"

T16N-R15W

T16N-R14W

27

26

25

30

29

La 525

Keithville-Springridge Rd.

CADDO

Keithville 171

34

35

36

31

32

3

2

1

6

5

DE SOTO

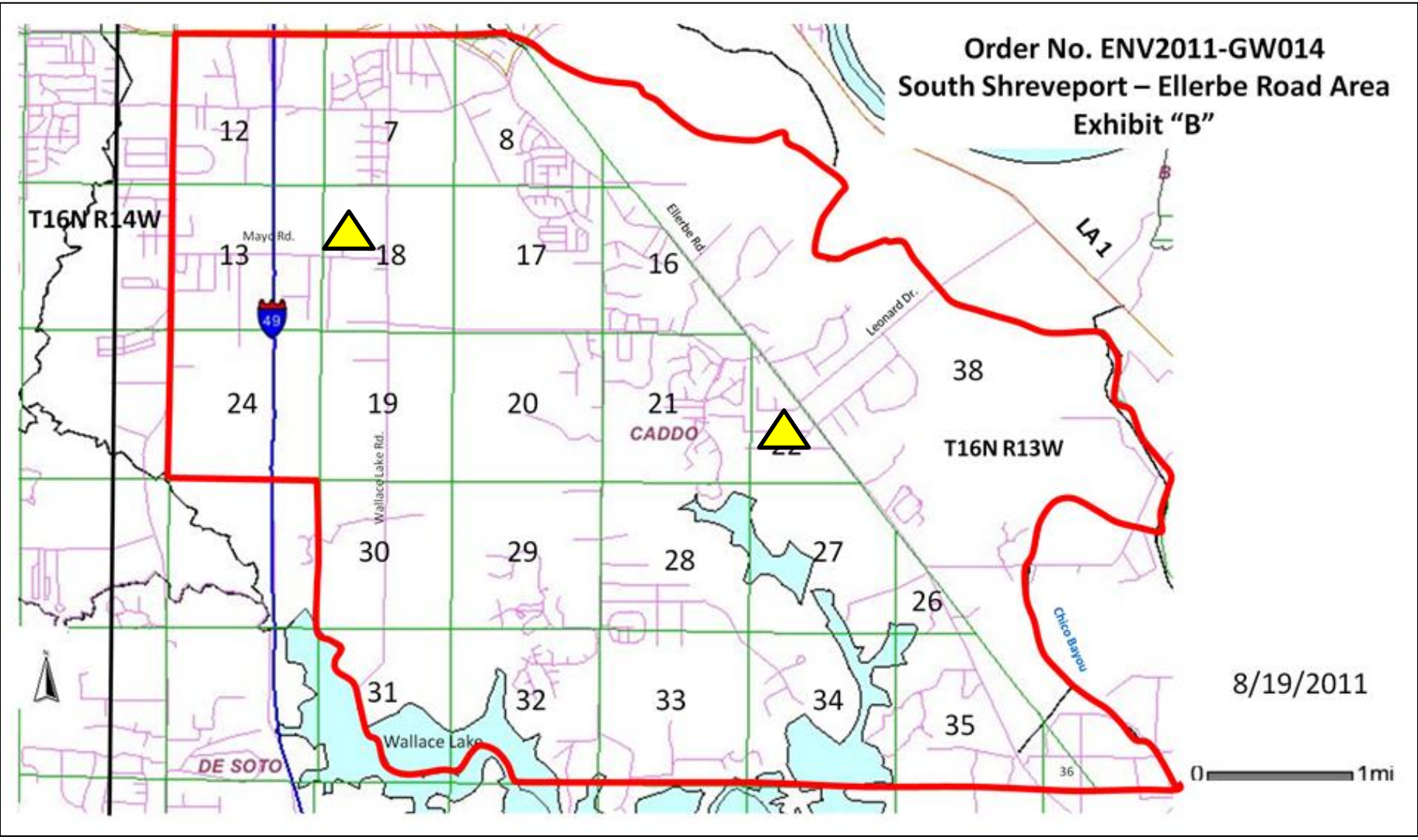
T15N-R15W

8/19/2011

T15N-R14W



Order No. ENV2011-GW014
South Shreveport – Ellerbe Road Area
Exhibit "B"



LSUS/ Caddo Parish
Groundwater Monitoring Well