

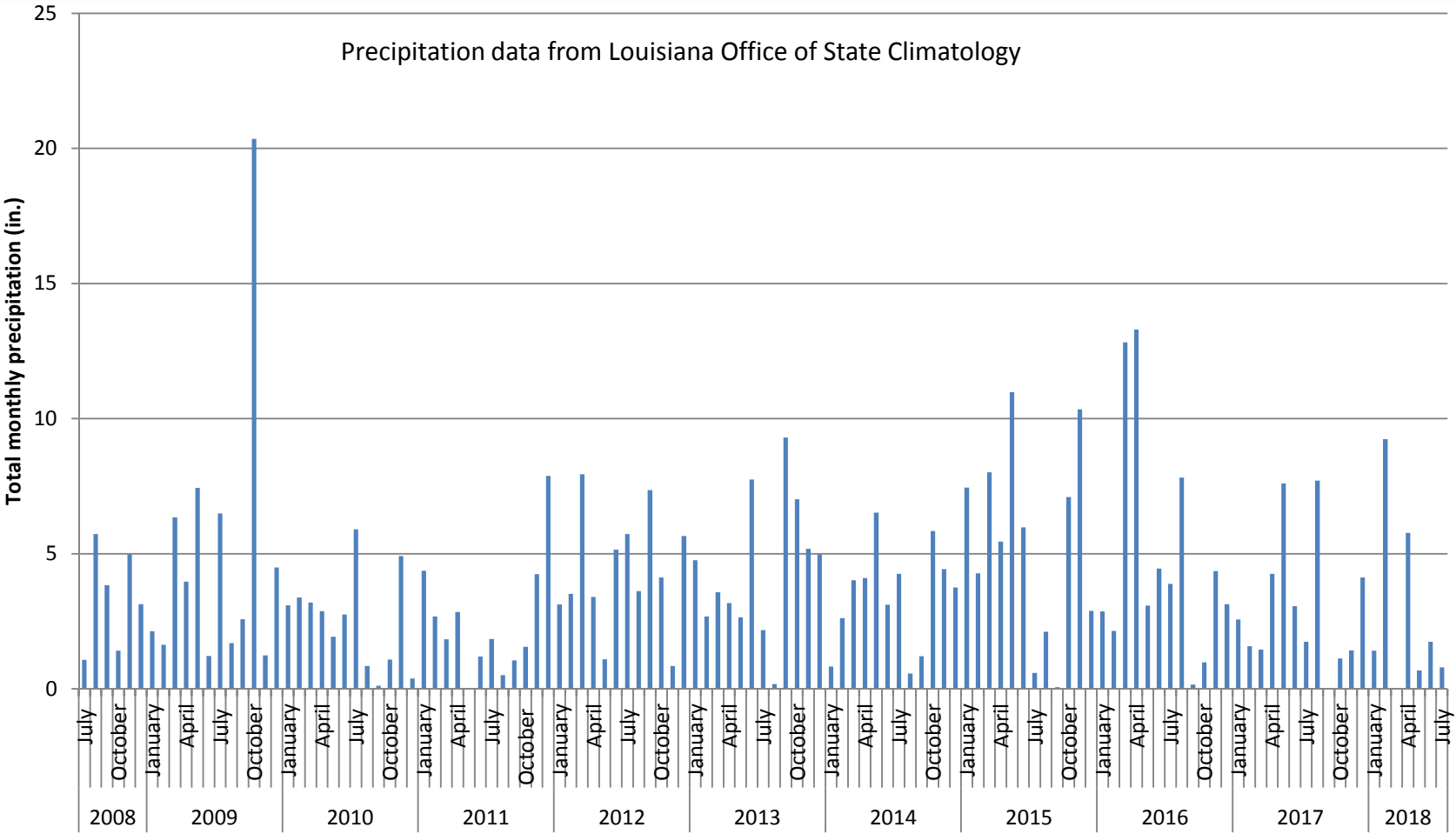


**Louisiana State University in Shreveport  
Red River Watershed Management Institute  
In cooperation with the Parish of Caddo**

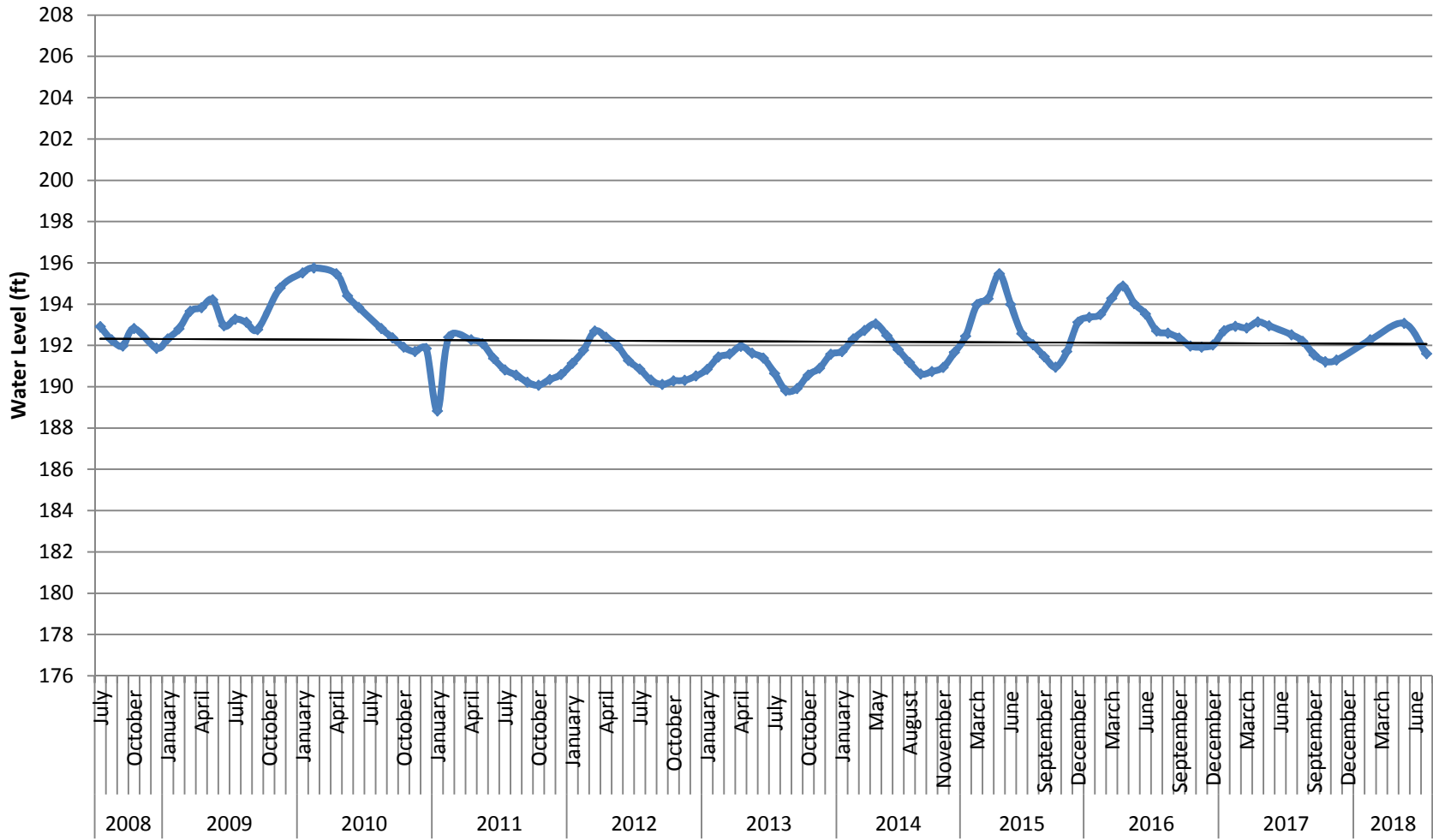
## **Project Report: Caddo Parish Groundwater Monitoring Project**

Update for July 27, 2018  
Caddo Parish Monitoring Wells  
Provisional Data, subject to revision

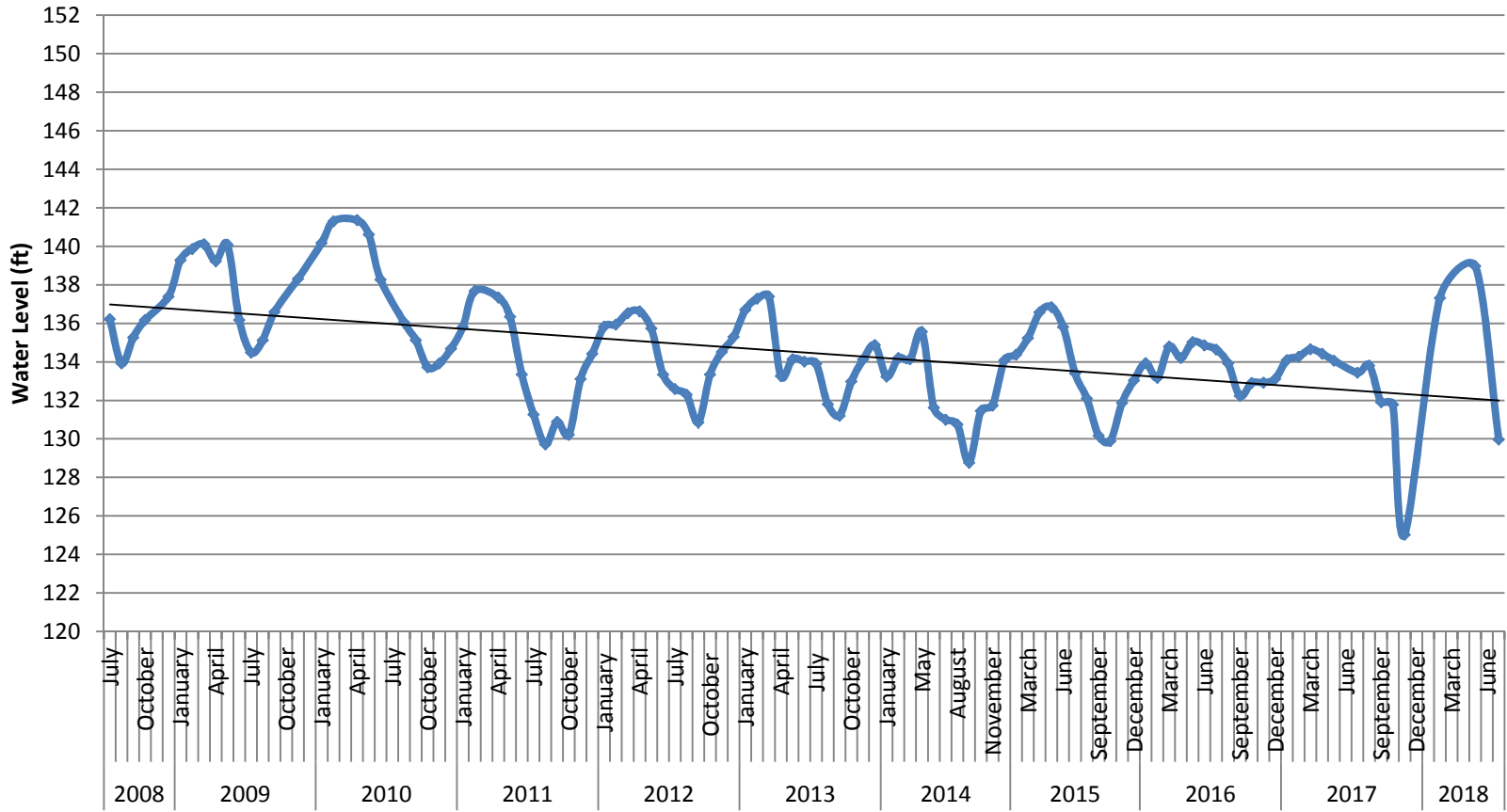
Precipitation data from Louisiana Office of State Climatology



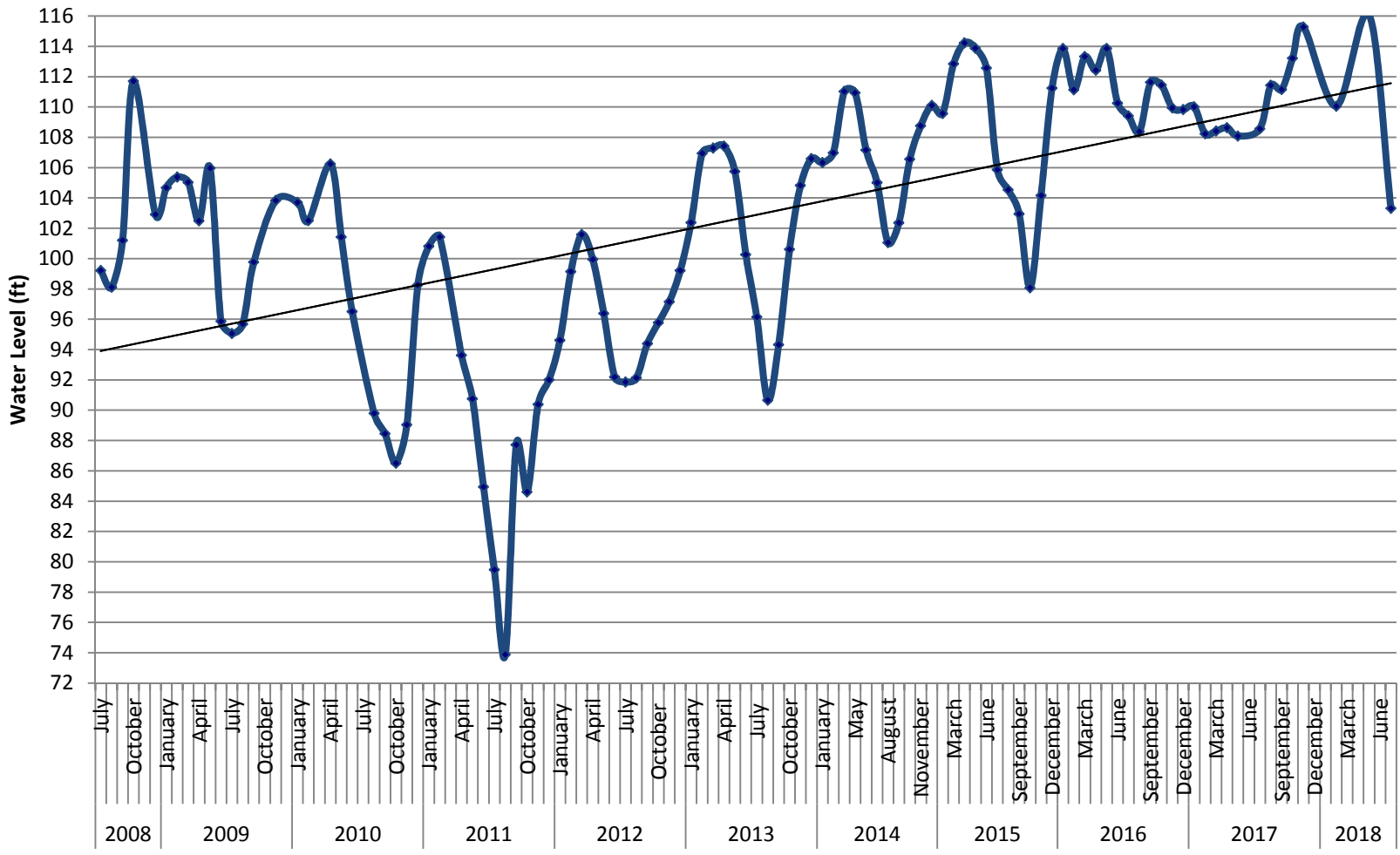
# Walter B. Jacobs Memorial Nature Park



# Hannah's Park



# Mayo Road

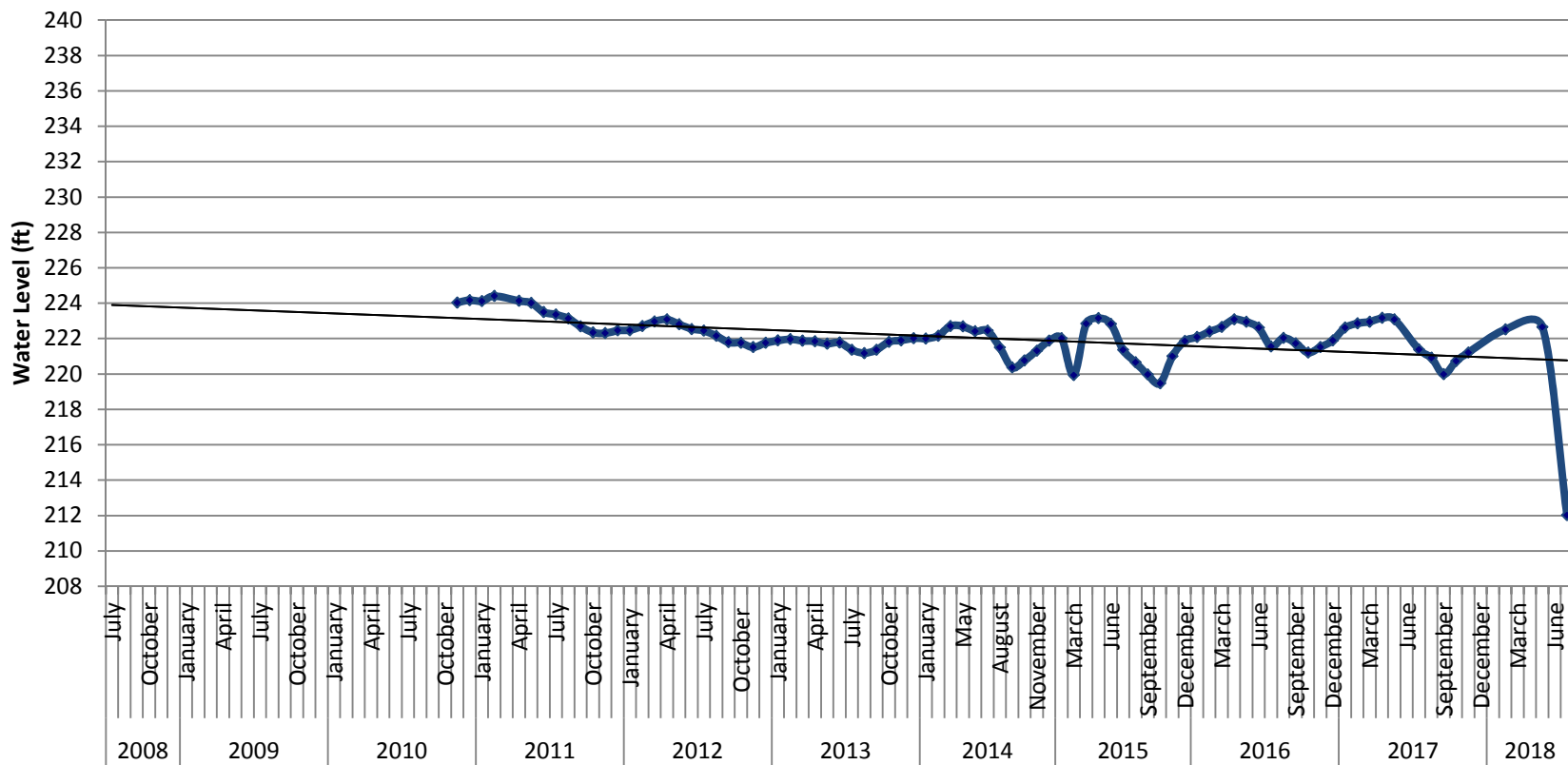




# Springridge

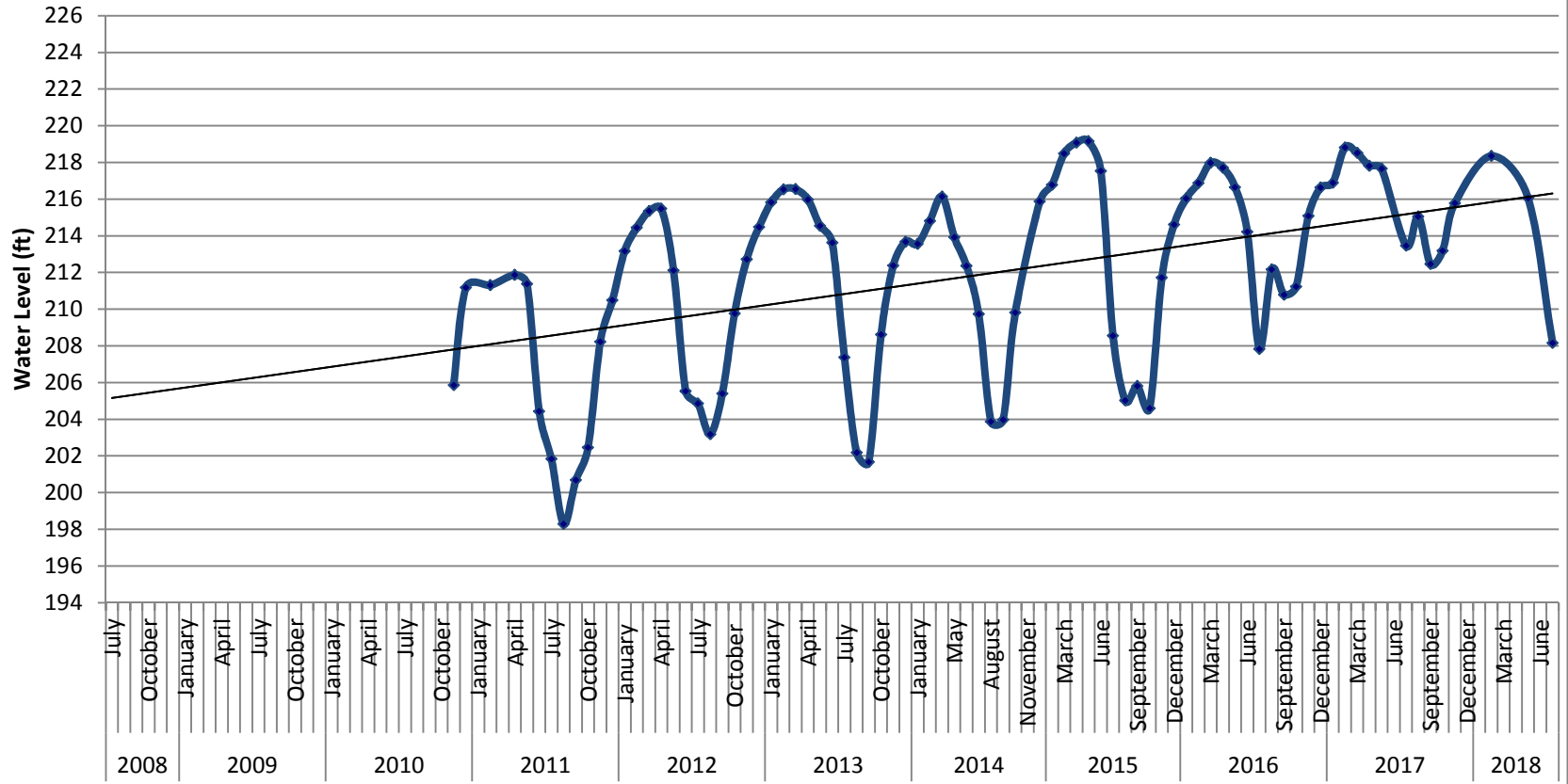


# Blanchard

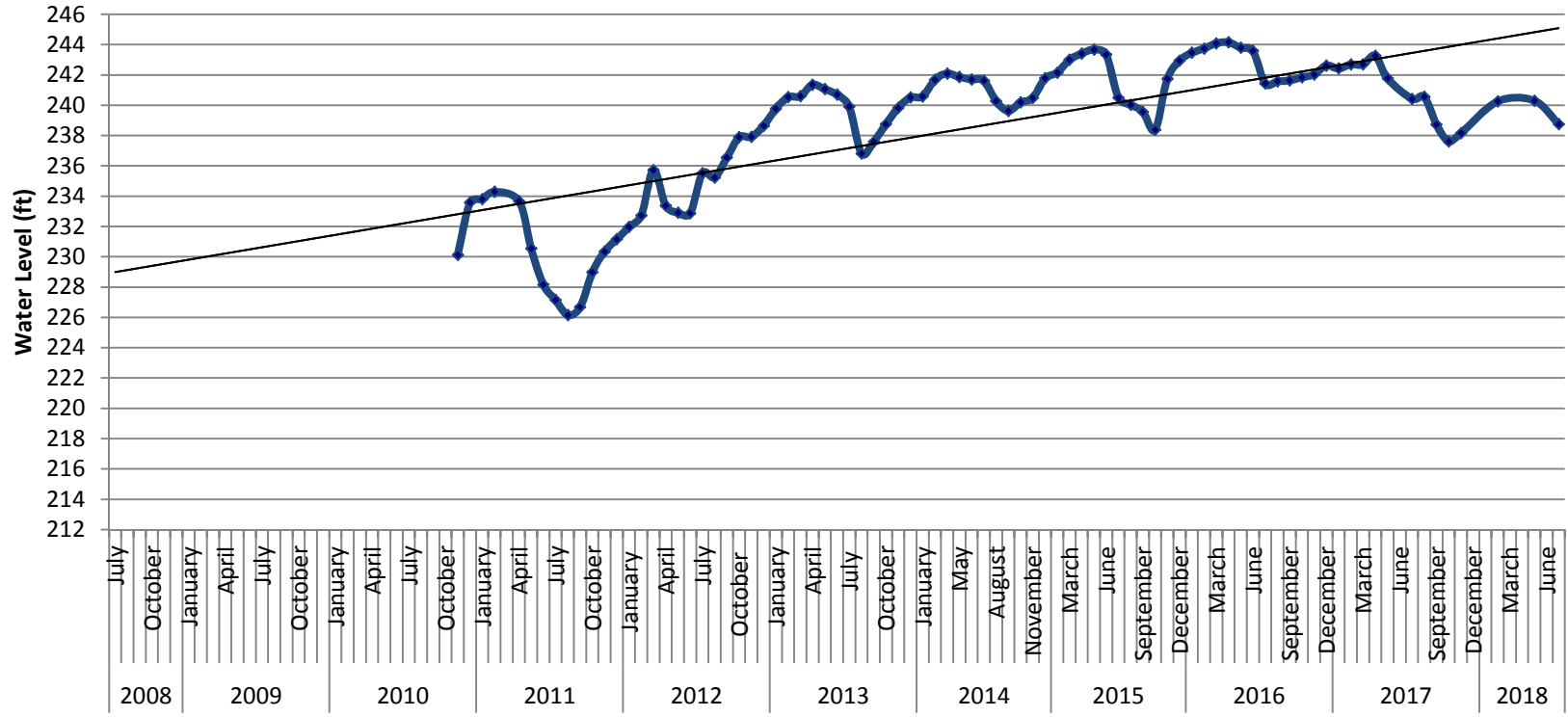




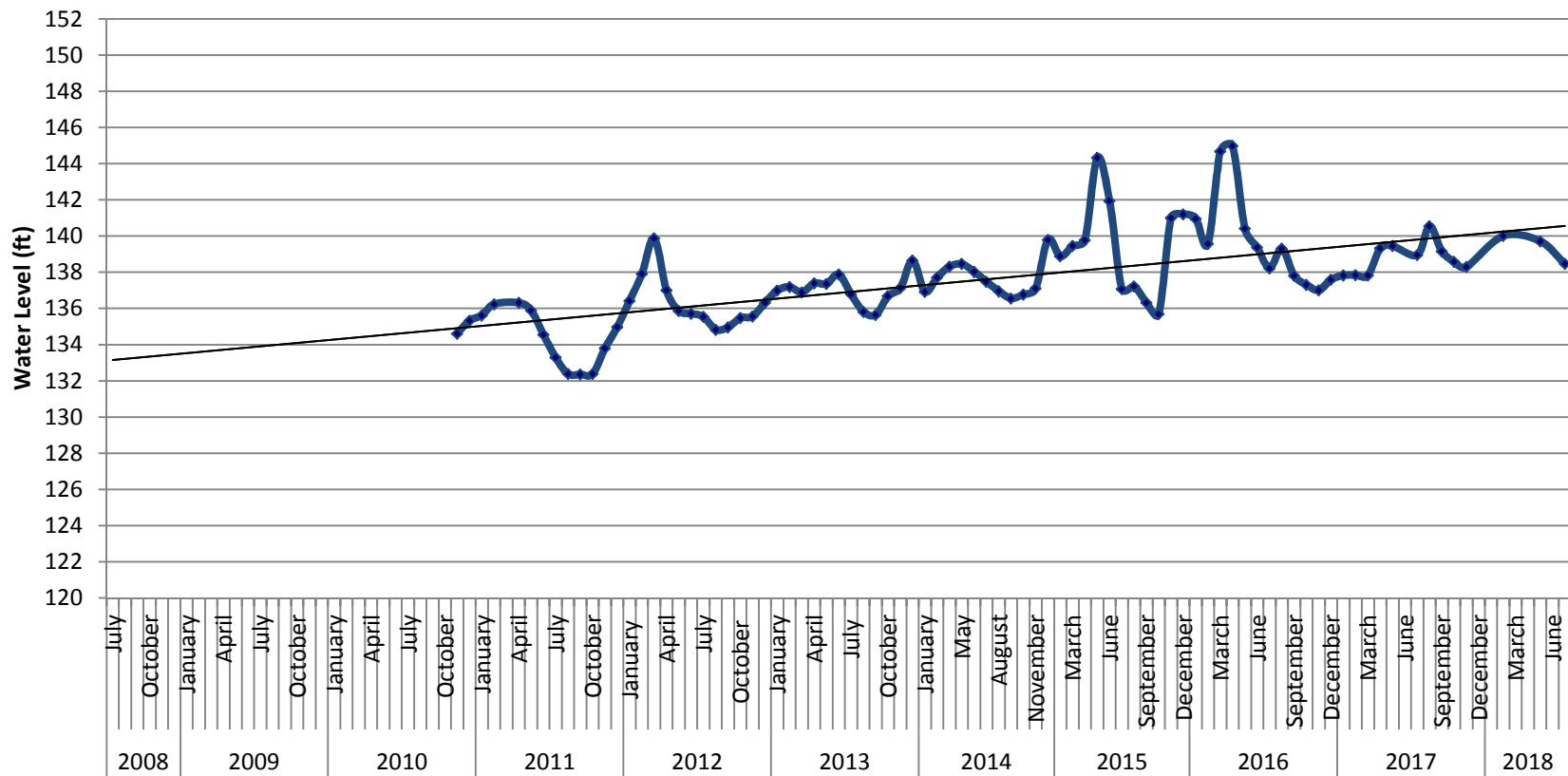
# Greenwood



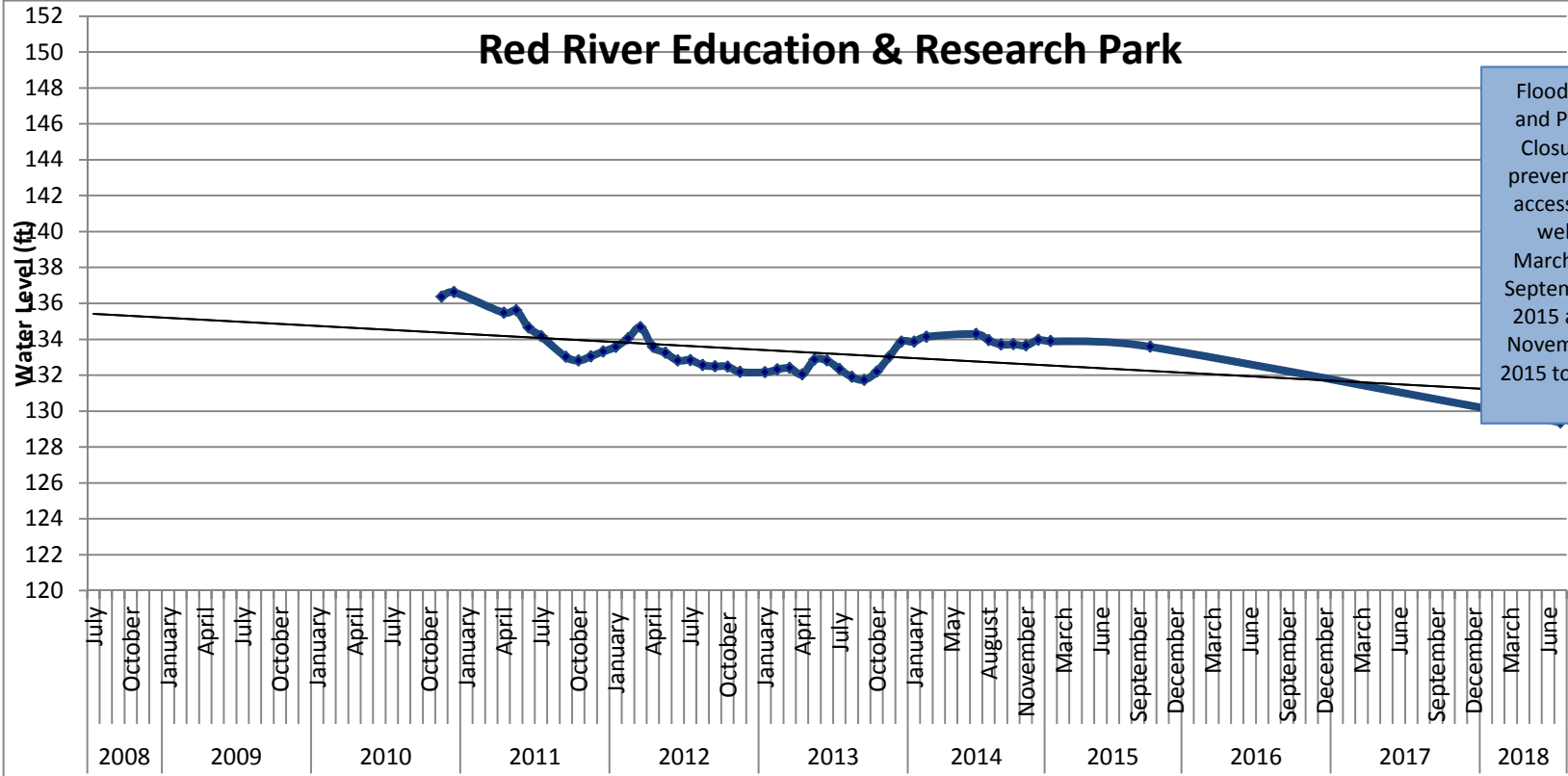
# Eddie D. Jone's Park



# Wallace Lake



# Red River Education & Research Park



Flooding and Park Closure prevented access to well March to September 2015 and November 2015 to July

# Caddo Parish Monitoring Wells

