

How to Join Eduroam Wireless On Windows 7

Complete Text Only Guide

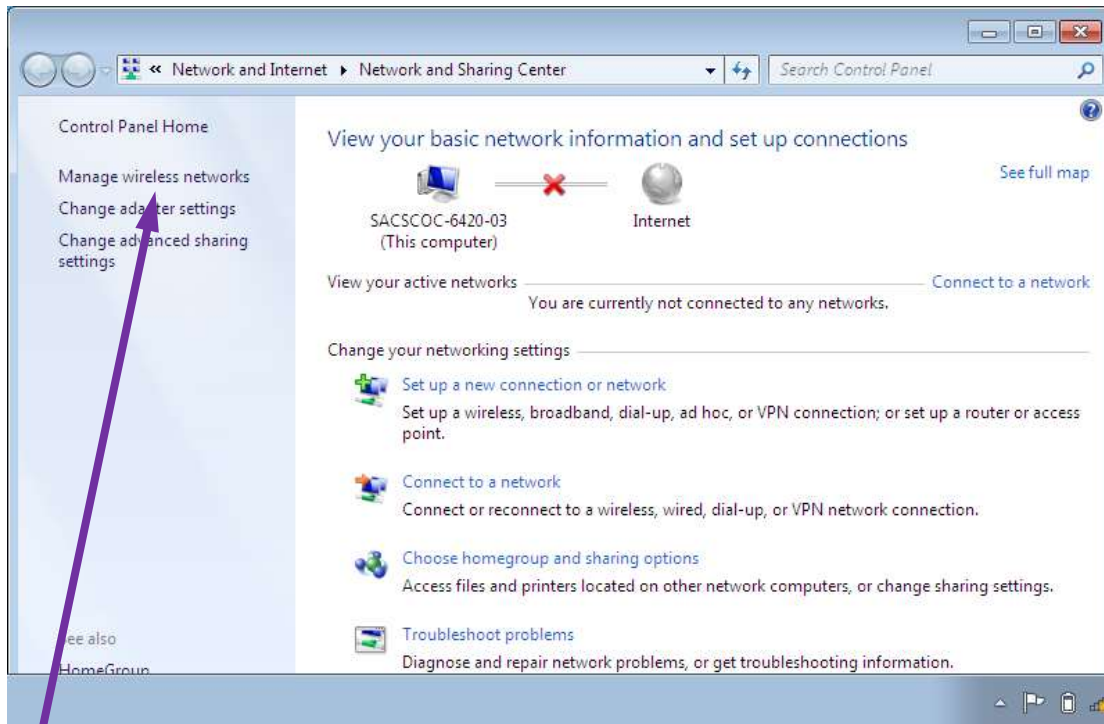
1. Click on the “Wi-Fi” icon.
2. Then click on “Open Network and Sharing Center.”
3. Click on “Manage wireless networks.”
4. Click on “Add.”
5. Click on “Manually create a network profile.”
6. Enter as follows:
 - Network name: eduroam
 - Security type: WPA2-Enterprise
 - Encryption type: AES
7. Then click “Next.”
8. Click “Change connection settings.”
9. Click on “Security.”
10. Click on “Settings.”
11. Uncheck “Validate Server Certificate”
12. Click on “Configure.”
13. Uncheck “Automatically use my Windows logon name and password.”
14. Click “OK” then click “OK” to exit all the previous menus.
15. When you are back to the desktop click the network icon again.
16. Click on “eduroam” then click connect.
17. Enter your information as follows:
 - YourID@lsus.edu
 - YourPassword
18. Click on “Public network.”

At this point your device should be on eduroam wireless.

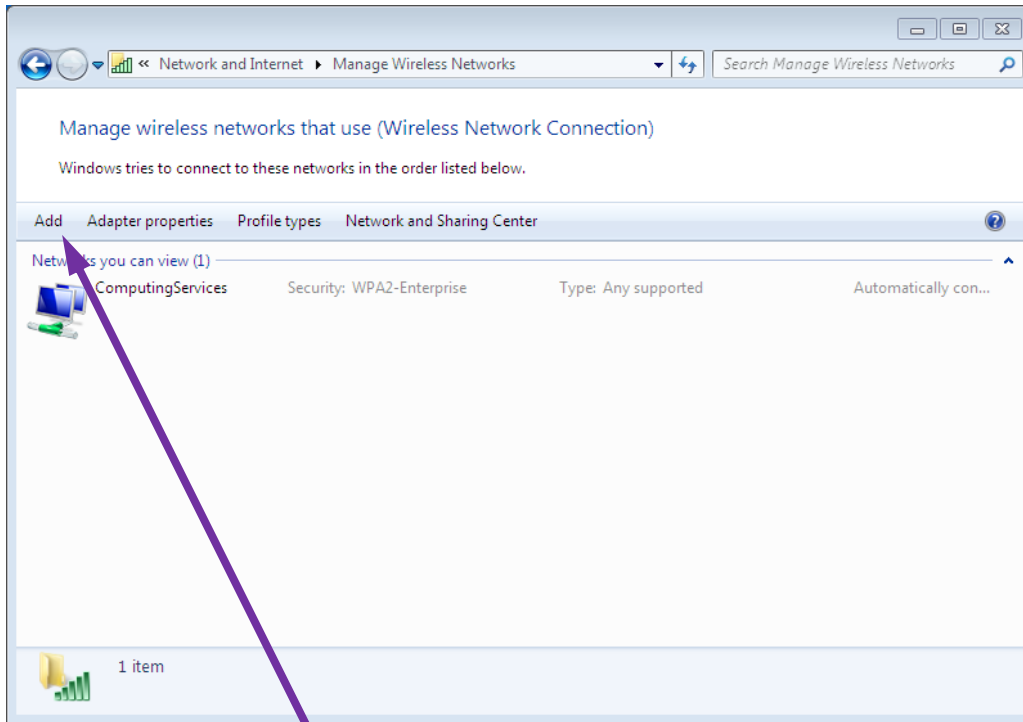
Picture Guide



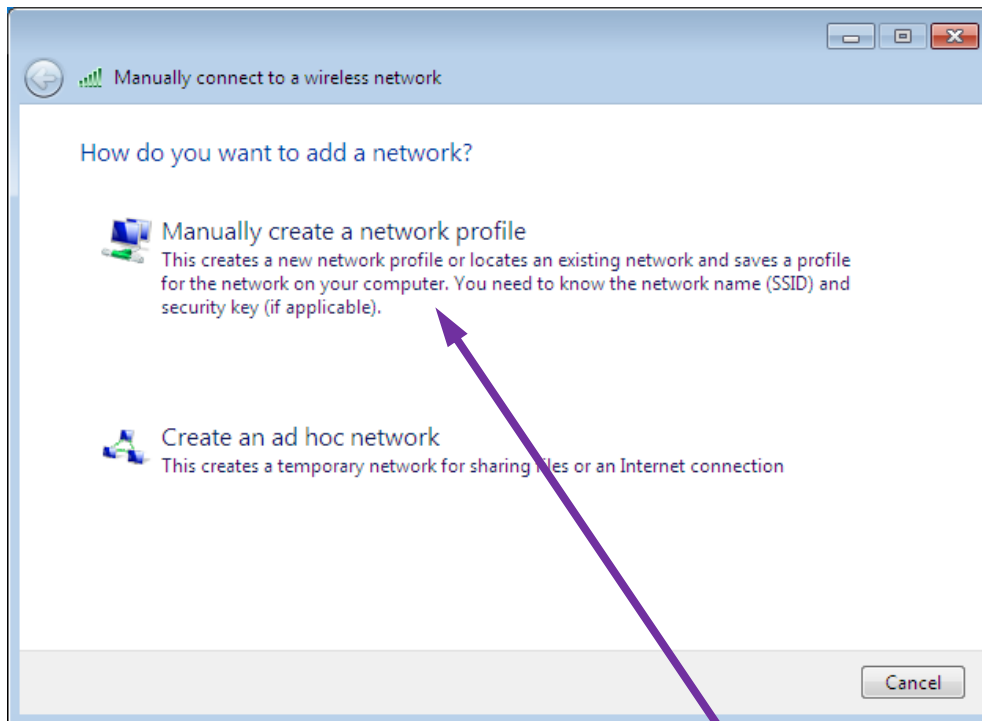
1. Click on the “Wi-Fi” icon.
2. Then click on “Open Network and Sharing Center.”



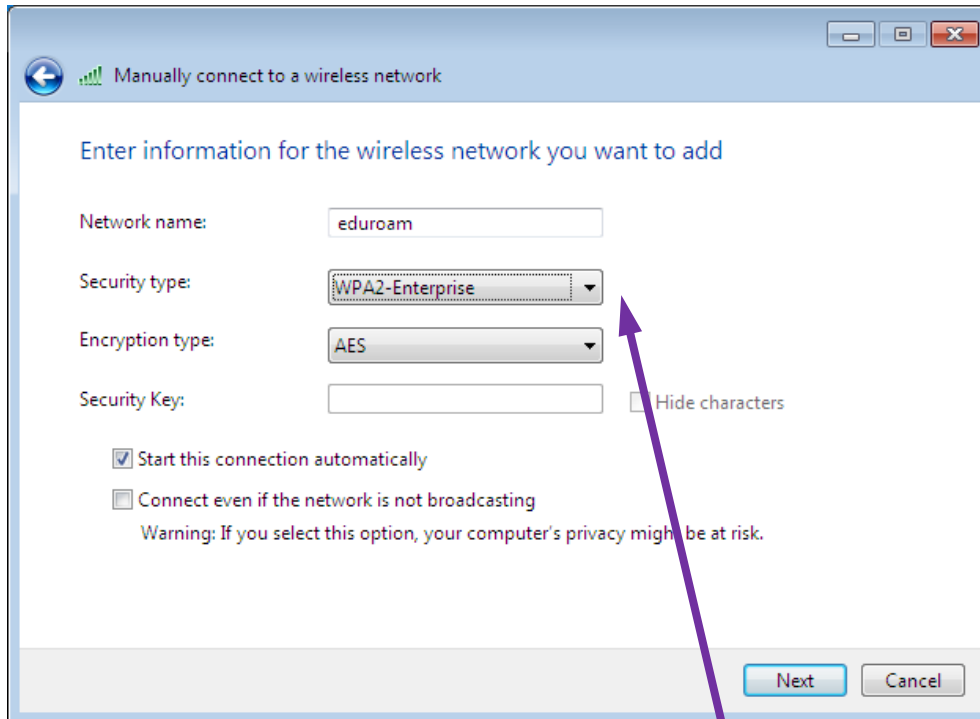
3. Click on "Manage wireless networks."



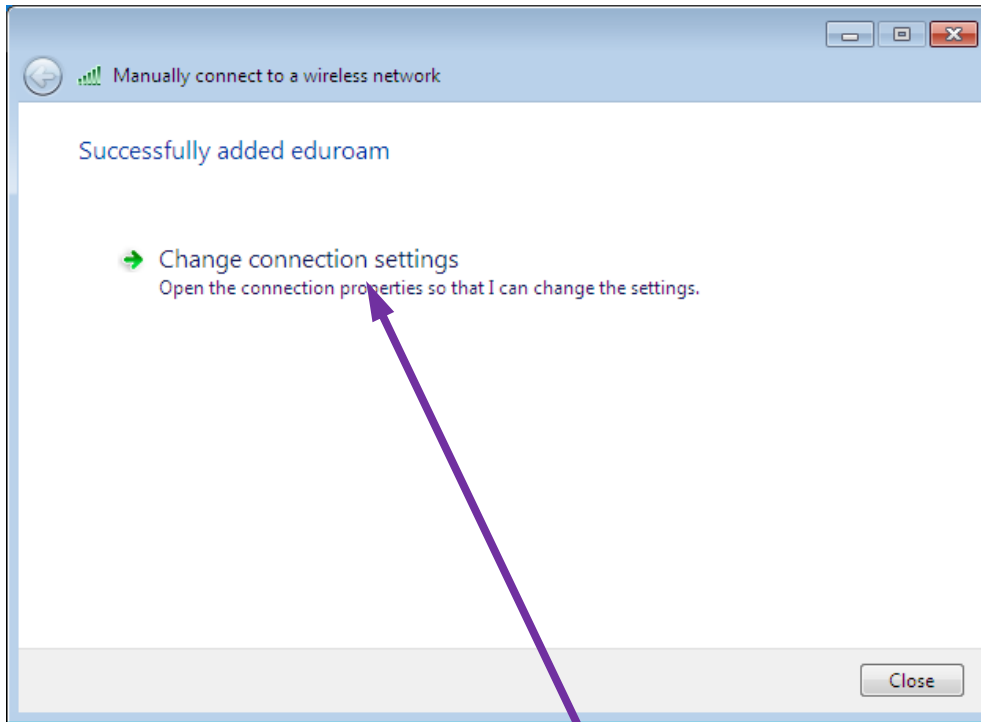
4. Click on "Add."



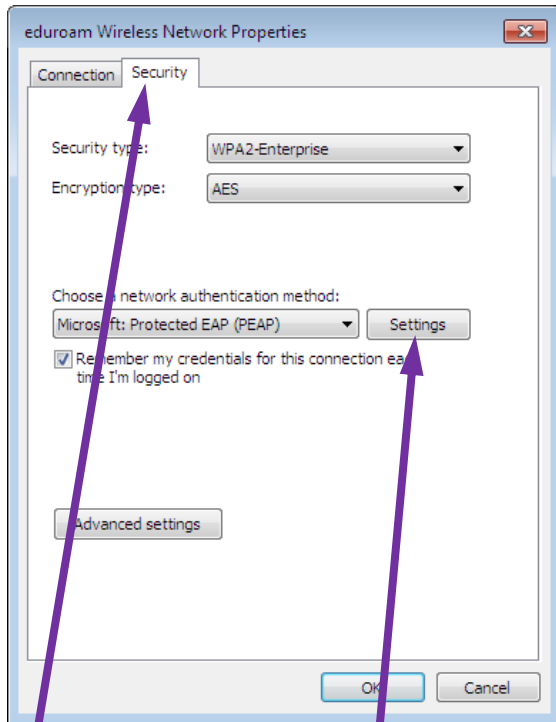
5. Click on "Manually create a network profile."



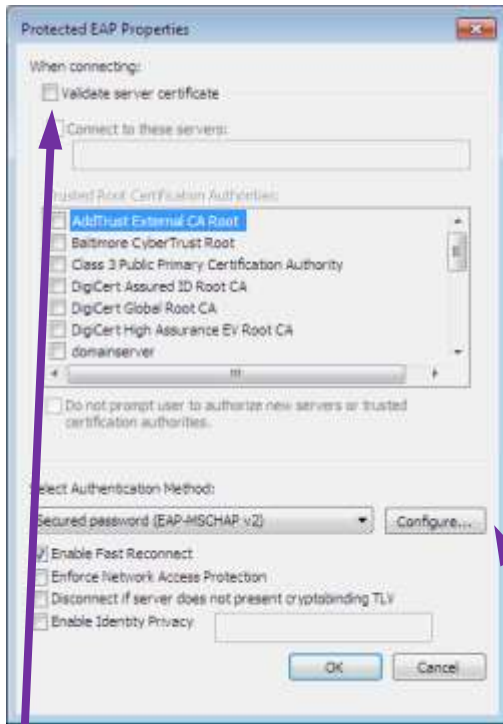
6. Enter as follows:
 - a. Network name: eduroam
 - b. Security type: WPA2-Enterprise
 - c. Encryption type: AES
7. Then click "Next."



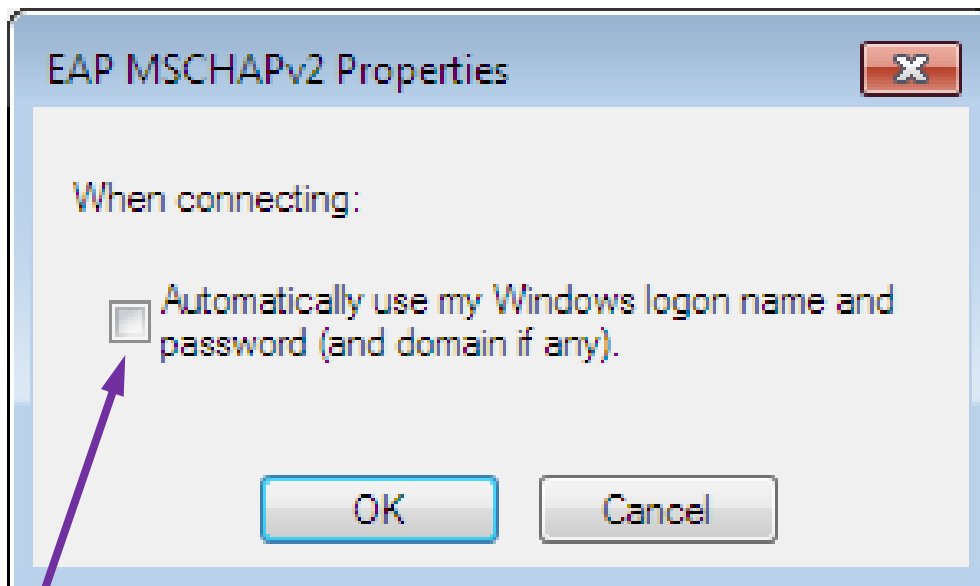
8. Click "Change connection settings."



- 9. Click on "Security."
- 10. Click on "Settings."




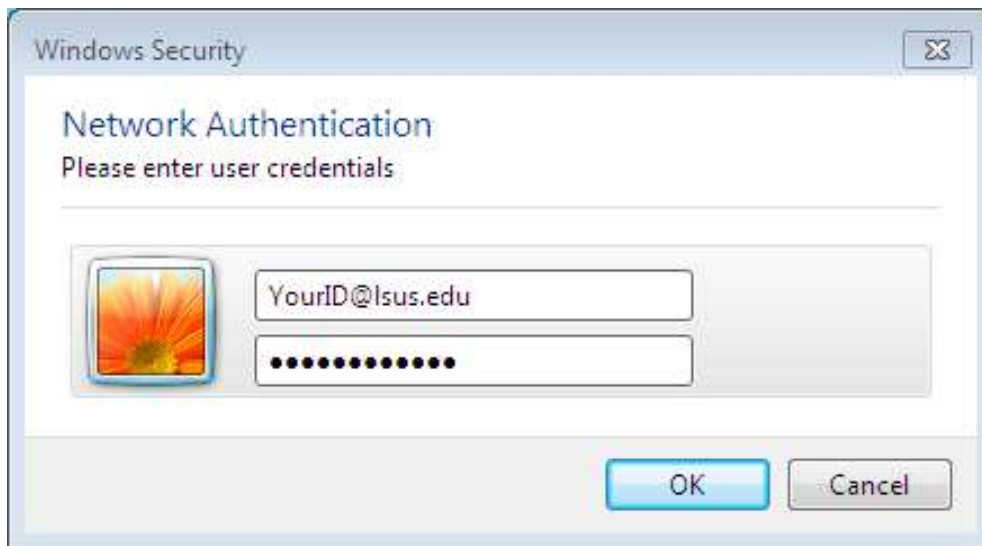
- 11. Uncheck "Validate Server Certificate"
- 12. Click on "Configure."



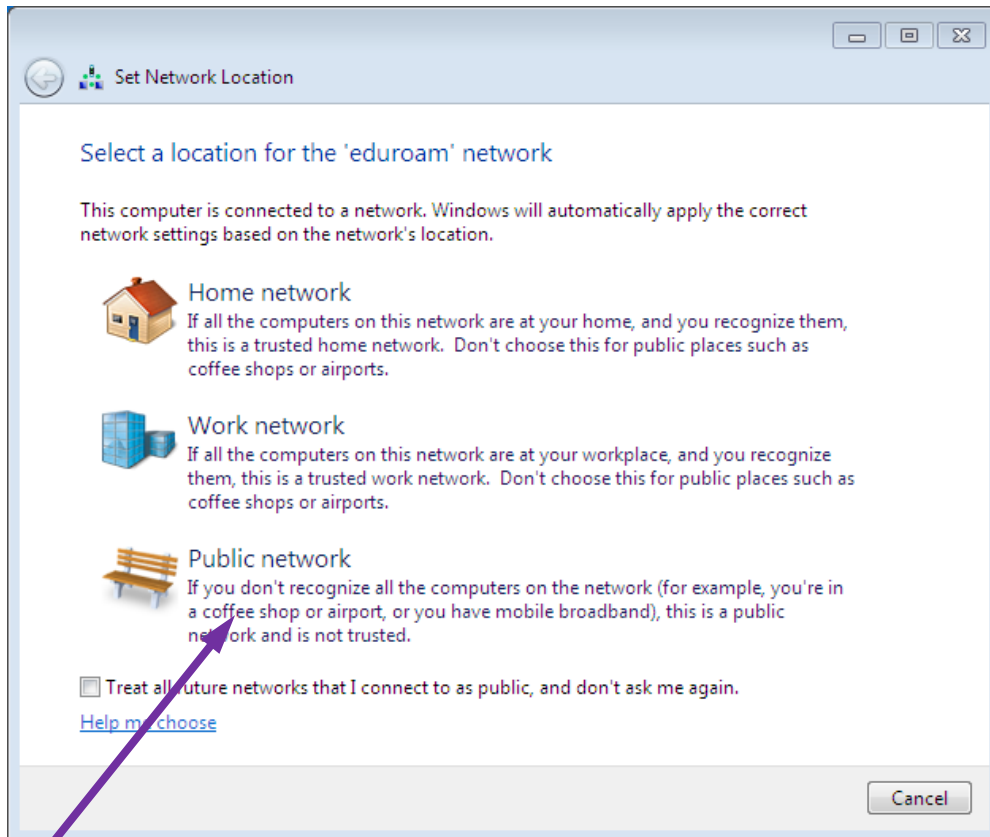
13. Uncheck "Automatically use my Windows logon name and password."
14. Click "OK" then click "OK" to exit all the previous menus.



15. When you are back to the desktop click the network icon again. 
16. Click on "eduroam" then click connect.



17. Enter your information as follows:
- a. YourID@lsus.edu
 - b. YourPassword



18. Click on “Public network.”

At this point your device should be on eduroam wireless.

If you still have issues please visit the Campus-Wide Lab in the University Center.